

Influencing High School Graduation Rates

Presented by: Helen Levy-Myers, Athena's Workshop
GASP! Government Advances in Statistical Programming
October 24, 2018

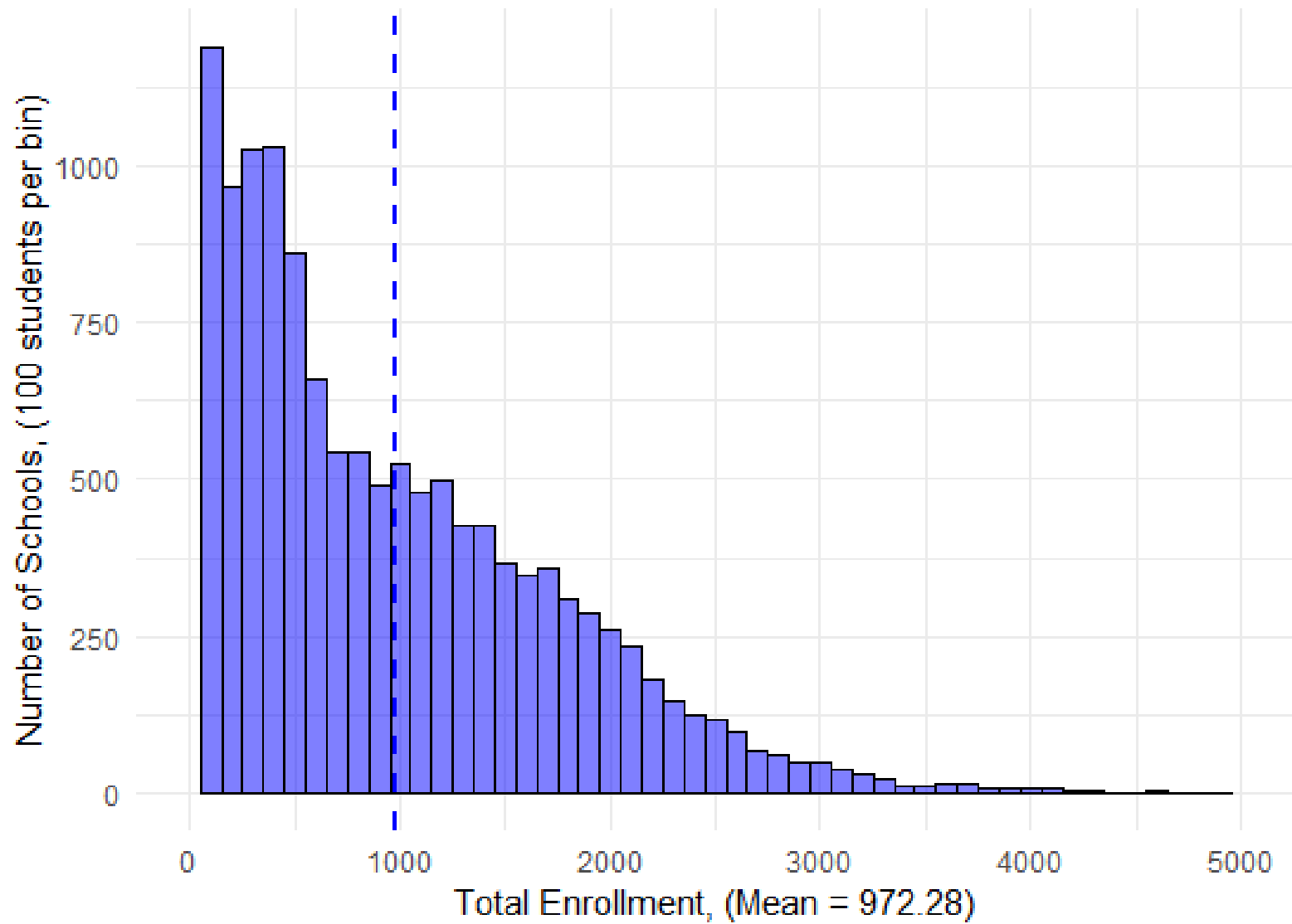


Data

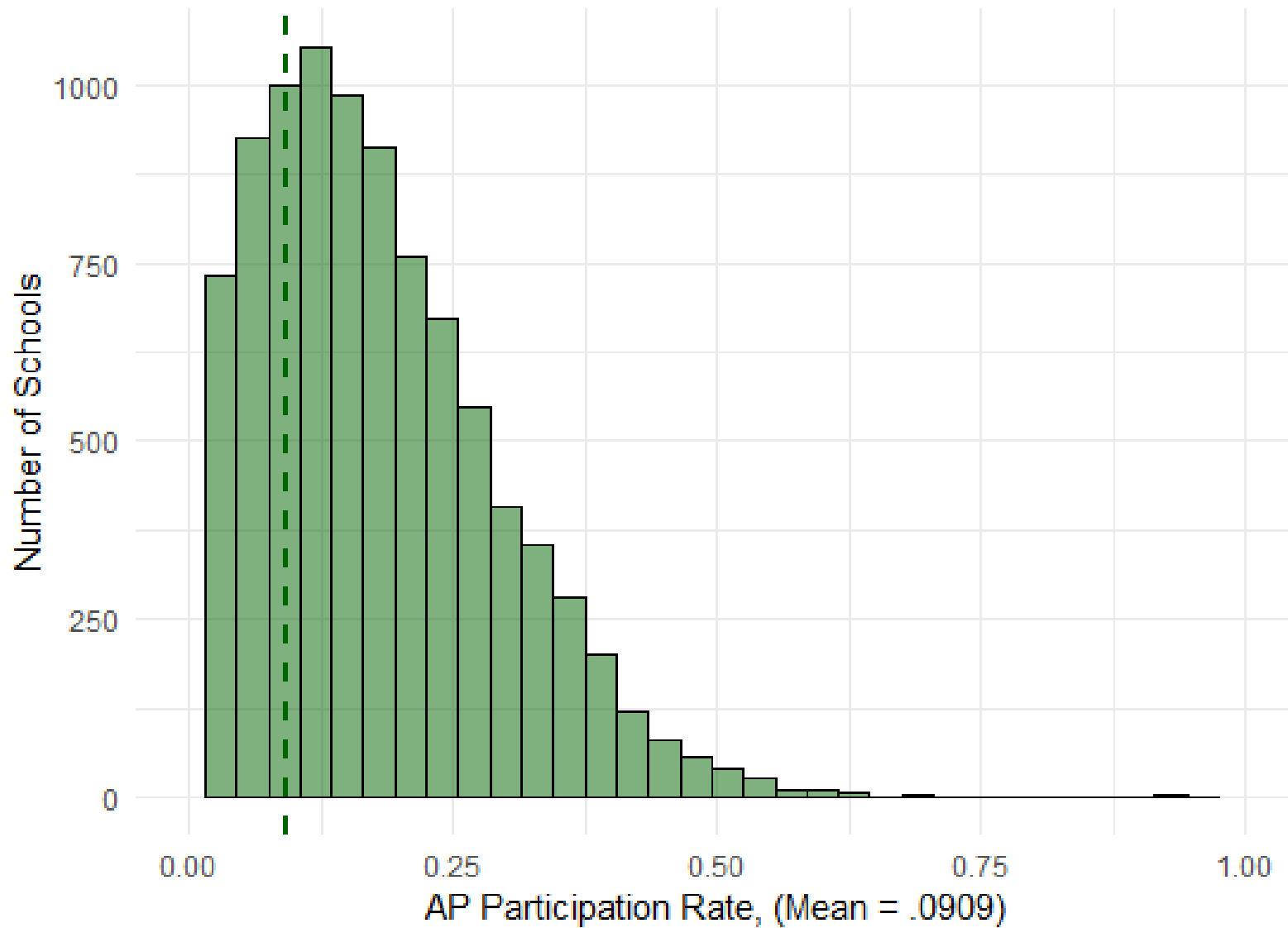
- ▶ Graduation data
 - ▶ 23,090 observations (high schools)
 - ▶ 28 variables - state name, NCES ID, graduation rate by male and female, cohort size, enrollment, etc.
- ▶ OCR data
 - ▶ 96,360 observations (pre-schools, elementary, middle, high schools, juvenile justice, alternative, charters, etc.)
 - ▶ 1,836 variables, bullying, teacher certification, absenteeism, sports participation, AP class, suspensions, expulsions, gender, ethnicity, disability, LEP, etc. subsets.
- ▶ Data examined totals for each variable.



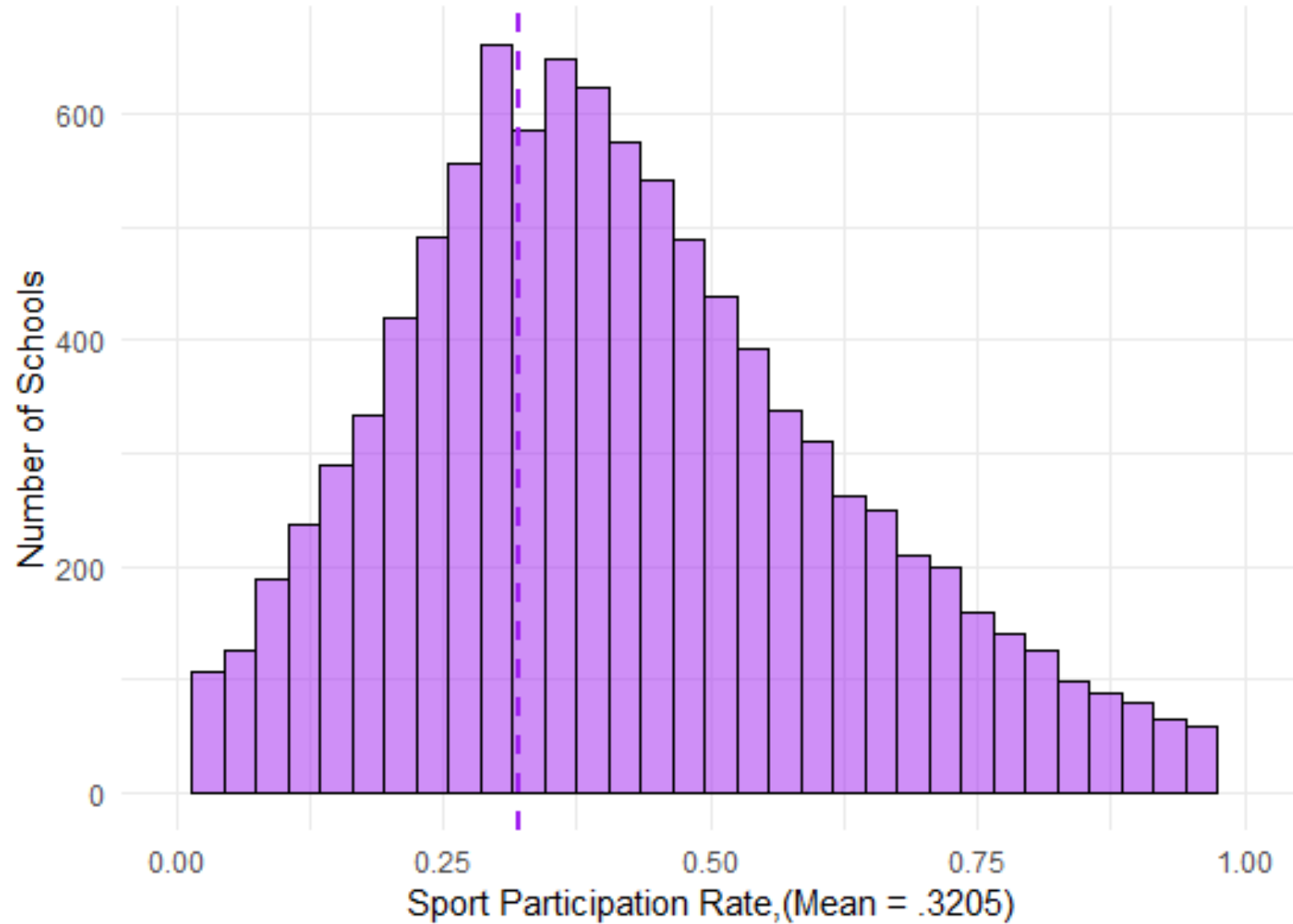
2015-16 School Enrollment



2015-16 AP Participation Rate

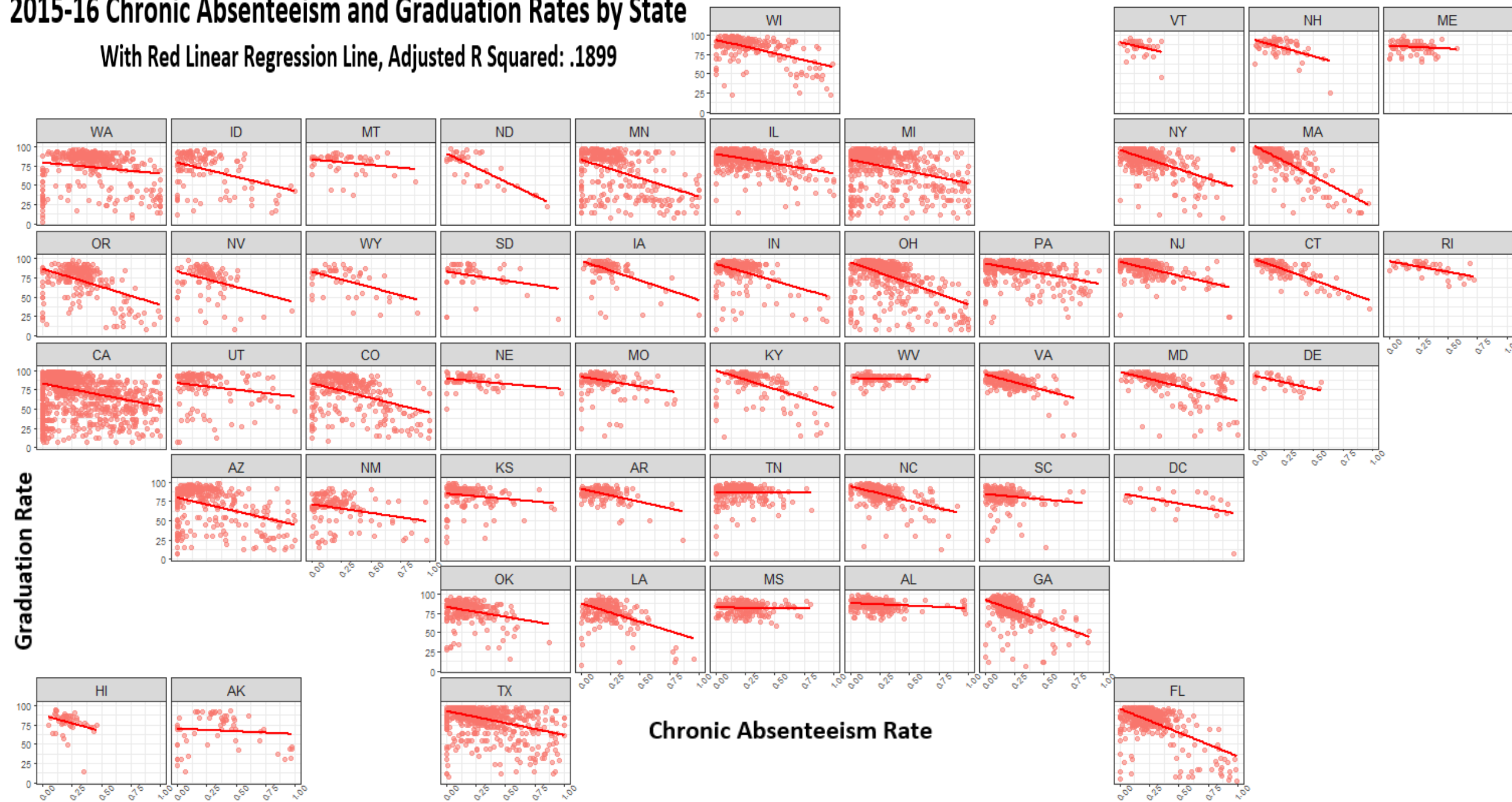


2015-16 Sport Participation Rate



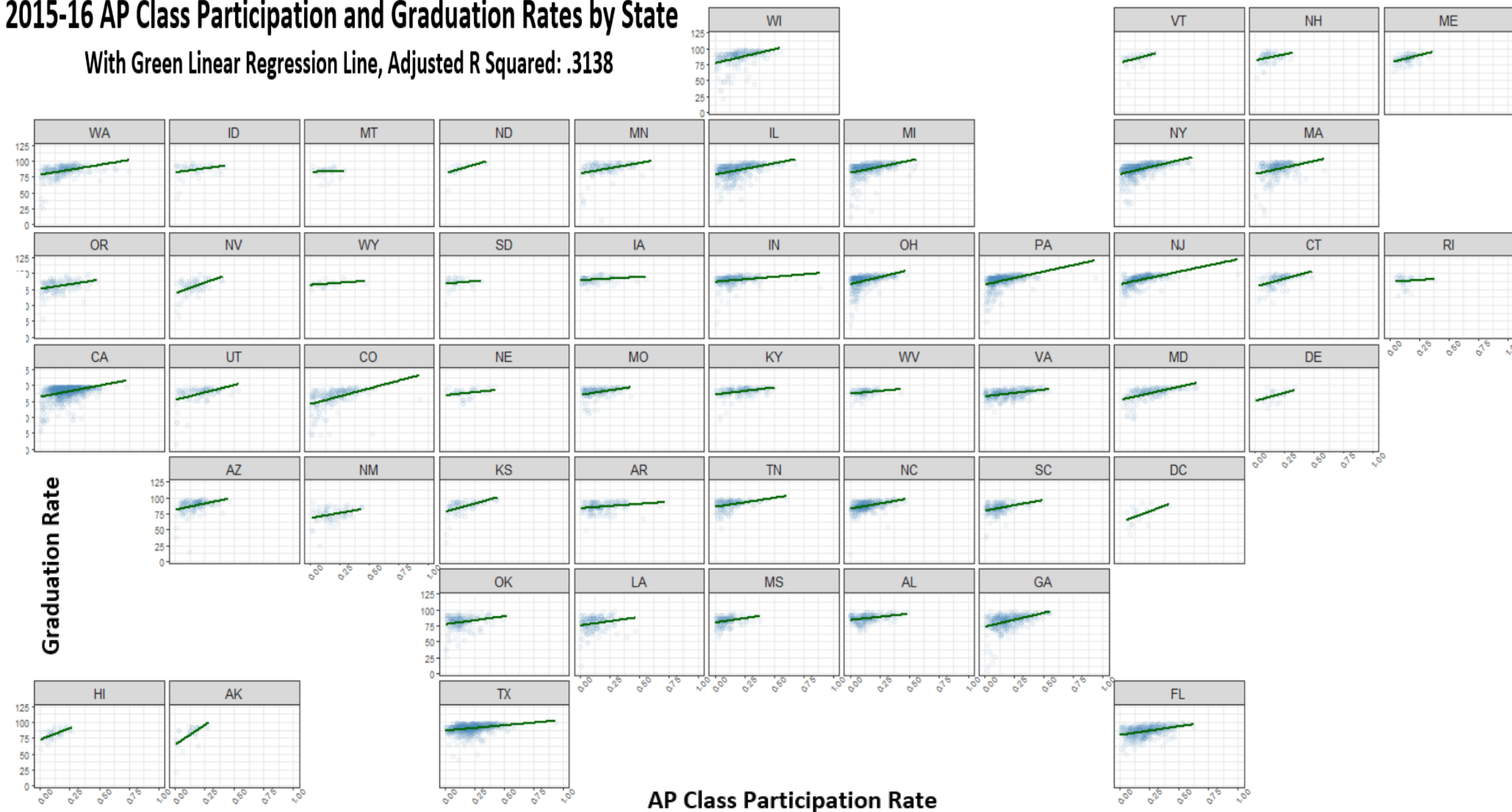
2015-16 Chronic Absenteeism and Graduation Rates by State

With Red Linear Regression Line, Adjusted R Squared: .1899



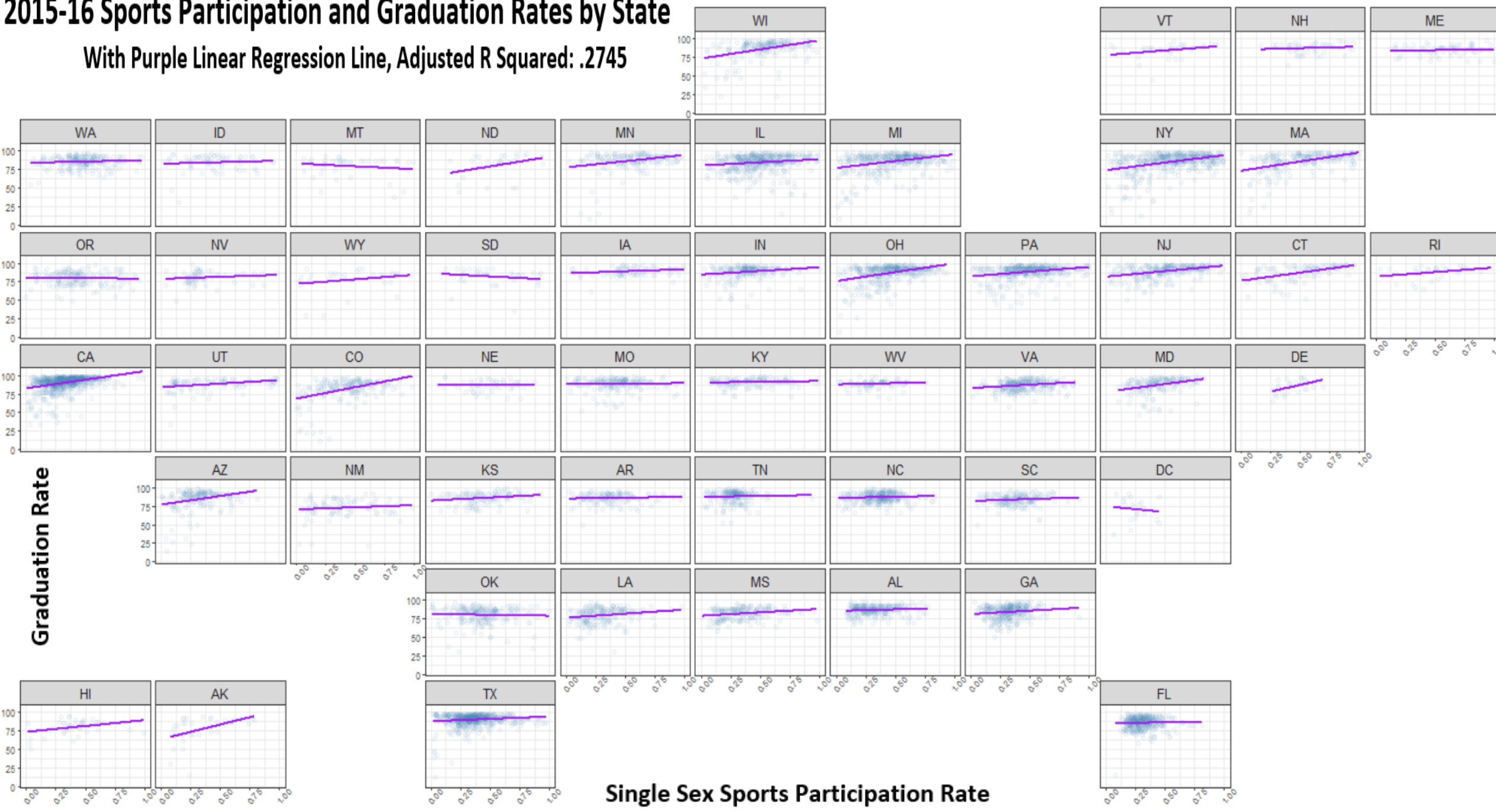
2015-16 AP Class Participation and Graduation Rates by State

With Green Linear Regression Line, Adjusted R Squared: .3138

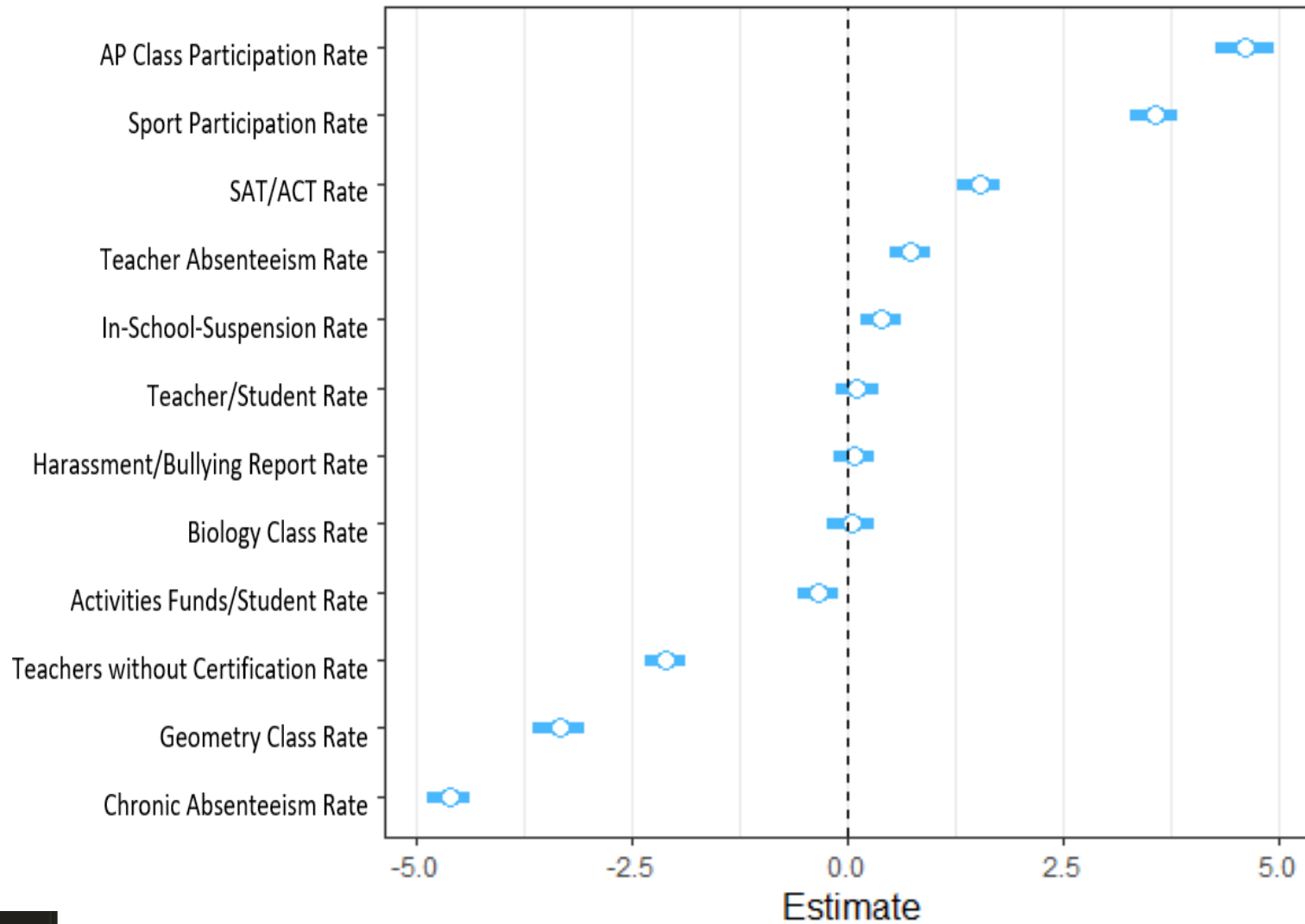


2015-16 Sports Participation and Graduation Rates by State

With Purple Linear Regression Line, Adjusted R Squared: .2745



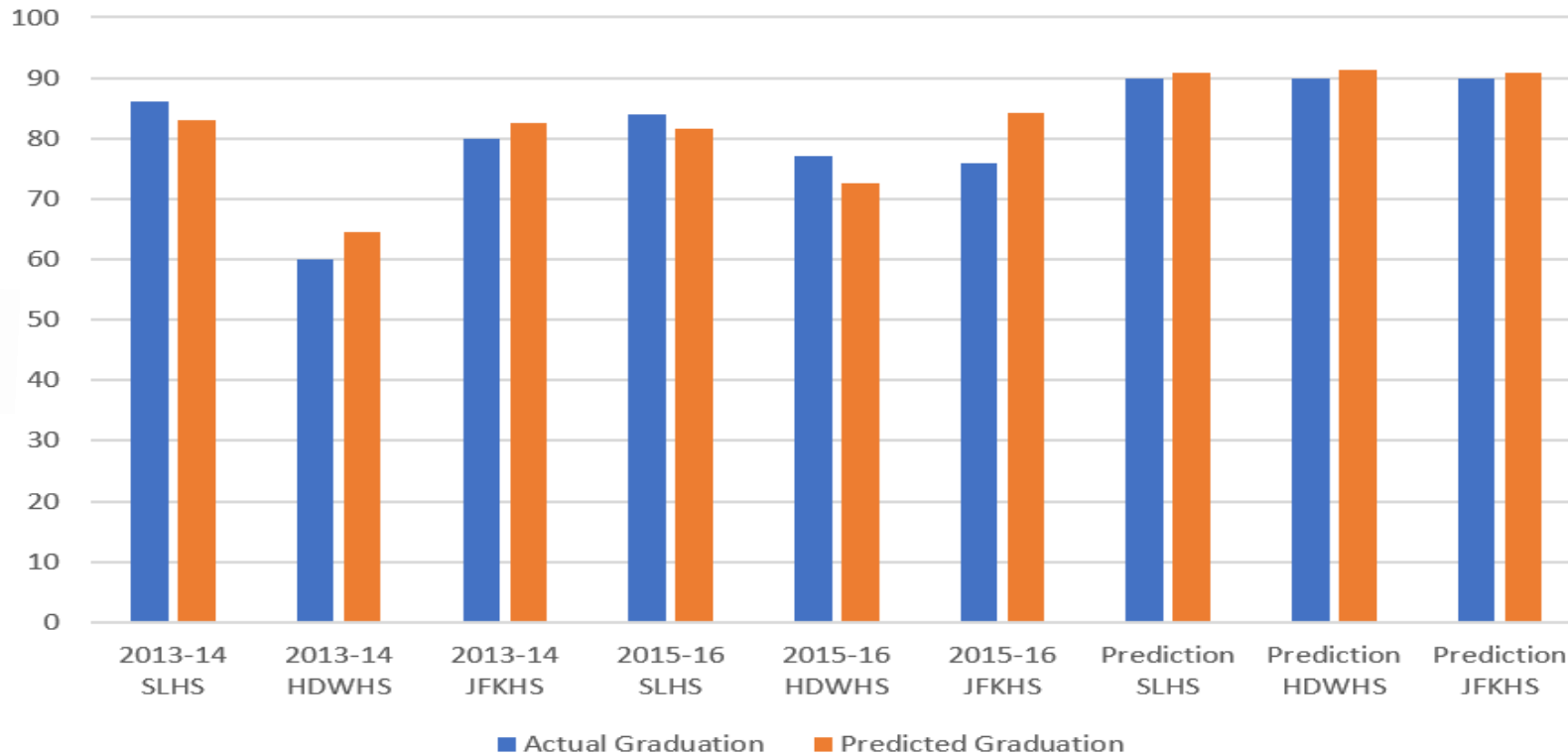
95% Confidence Intervals



Graduation Rates

Actual vs. Model Prediction

```
GradPredictionModel2 <- lm(GRAD_RATE ~ (ChrAbsentRate + APRate + SportRate), data = JoinModel1516)
grad1516predict2 <- predict(GradPredictionModel2, newdata = newData1516a, interval = "confidence")
Residual standard error: 14.22 on 13061 degrees of freedom
Multiple R-squared: 0.2824, Adjusted R-squared: 0.2822
F-statistic: 1713 on 3 and 13061 DF, p-value: < 2.2e-16
```



Schools:

South Lakes High School (Fairfax County Public Schools, VA)

H.D. Woodson High School (District of Columbia Public Schools, DC)

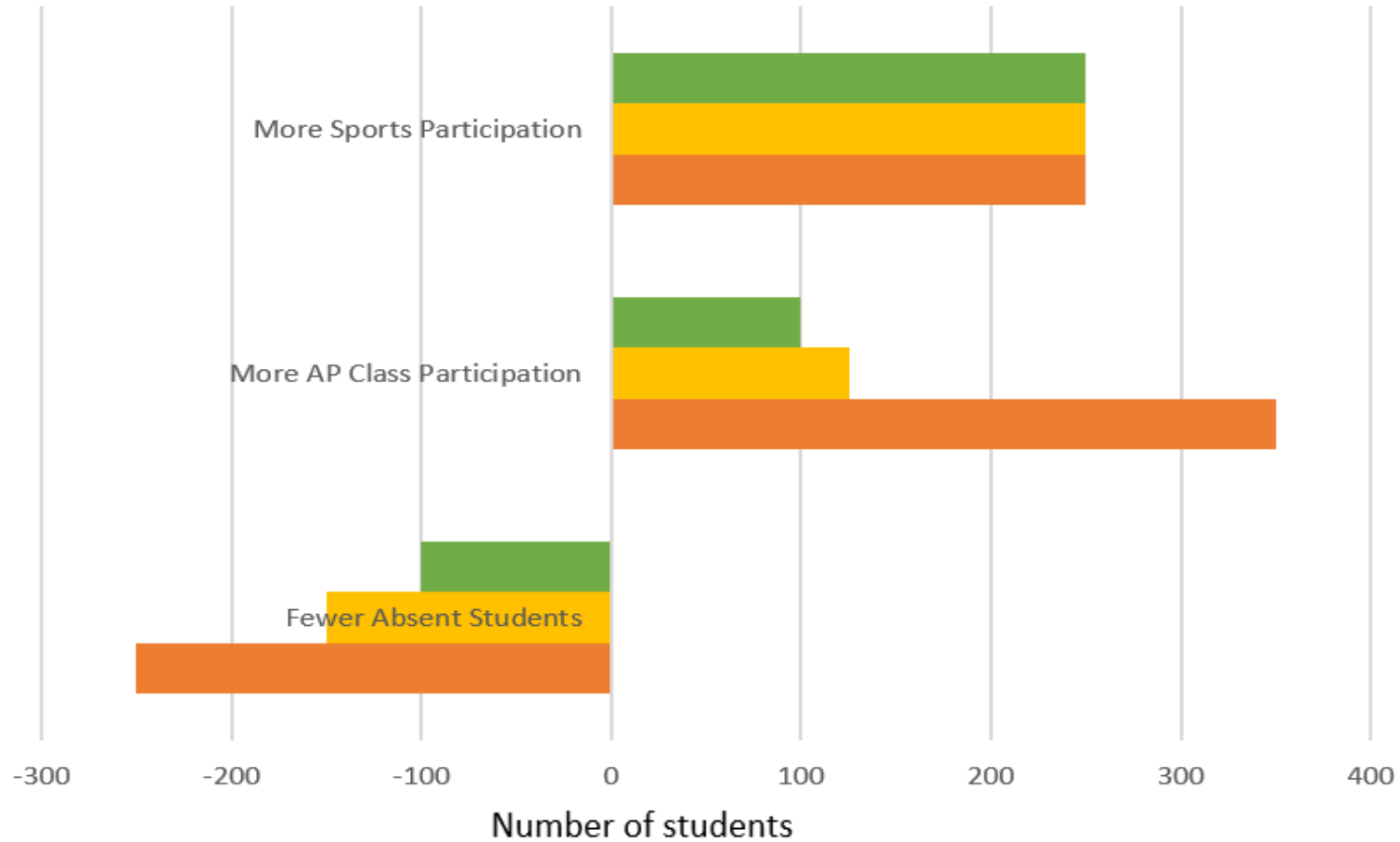
John F. Kennedy High School (Montgomery County Schools, MD)



Athena's Workshop

Helping You Build Successful Students

Changes to Achieve 90% Graduation



- John F. Kennedy High School (Montgomery County Schools, MD)
- H.D. Woodson High School (District of Columbia Public Schools, DC)
- South Lakes High School (Fairfax County Public Schools, VA)



Data Sources

- ▶ <https://www2.ed.gov/about/inits/ed/edfacts/data-files/acgr-sch-sy2013-14.csv>
- ▶ <https://www2.ed.gov/about/inits/ed/edfacts/data-files/acgr-sch-sy2015-16.csv>
- ▶ <https://www2.ed.gov/about/offices/list/ocr/docs/crdc-2013-14.html>
- ▶ <https://www2.ed.gov/about/offices/list/ocr/docs/crdc-2015-16.html>



Thank you

- ▶ Michael Jadoo for inviting me to present this information
- ▶ Reuben Levy-Myers for advice on the presentation
- ▶ Nathanael Aff for advice and help on modeling and data cleaning



Let's Keep In Touch

- ▶ Helen Levy-Myers
- ▶ Athena's Workshop
- ▶ [Email: Hlevy-myers@athenasworkshop.com](mailto:Hlevy-myers@athenasworkshop.com)
- ▶ Phone: 703-615-4429
- ▶ Twitter: @hlevymyers



Athena'sWorkshop
Helping You Build Successful Students