



WSS NEWS

February 2008

WASHINGTON
STATISTICAL
SOCIETY

WSS AUDIT REPORT, FY06

The audit of the WSS financial and income tax statements for tax year 2006 (from July 1, 2006 to June 30, 2007) has been completed. The statements were found to be in order. The audit committee thanks Treasurer Daniell Toth for his service and cooperation.

As of June 30, 2007, WSS had assets totaling \$73,481.34. \$17,581.34 was in a checking account and \$55,900 was in a fixed term CD connected to the Hansen fund. Total tax year 2006 WSS revenues were \$71,985, of which \$50,000 was in support of the Hansen fund.

Stuart Scott and Clifton Bailey, WSS Audit Committee

Nominations Sought for 2008 Gertrude M. Cox Award

The Gertrude M. Cox Award Committee is seeking nominees for the 2008 Gertrude M Cox Award. Established in 2003 through a joint agreement between the Washington Statistical Society (the Washington DC chapter of ASA) and the statistician in early to mid-career (roughly no more than 12 years after terminal degree) who has already made significant contributions to statistical practice. It is presented at the Washington Statistical Society (WSS) Annual Dinner (generally held in June) with the recipient delivering the keynote address at that dinner on a topic of general interest to the WSS membership.

The award is in memory of Gertrude M. Cox (1900-1978), who in the 1950's, when Head of the Department of Experimental Statistics at North Carolina State College, played a key role in establishing Mathematical and Biostatistics Departments at the University of North Carolina at Chapel Hill, and a Statistical Division at the newly founded not-for-profit Research Triangle Institute (RTI). She served as president of the ASA in 1957.

This award is made possible by funding from RTI, and the recipient is chosen by a 6 person committee-3 each from RTI and WSS. This year's committee from RTI consists of Nabil El-Khorazaty, Moshe Feder, with Paul Levy (RTI Chair), and from WSS consists of Karol Krotki, Michael P. Cohen (WSS Chair), and Jill Montaquila. It consists of a \$1000.00 honorarium, travel expenses to attend the WSS dinner, and a commemorating plaque containing the WSS logo. Past recipients have been Sharon Lohr, Alan Zaslavsky, Tom Belin, Vance Berger, and Francesca Domenici.

Please email your nominations to Michael P. Cohen (mpcohen@juno.com) and Paul S. Levy (levy@rti.org) by Feb 15, 2008.

2008 Wray Jackson Smith Scholarship

Applications due by April 15, 2008! The Government Statistics Section (GSS) and Social Statistics Section (SSS) of ASA are pleased to announce the availability of a scholarship in memory of Wray Jackson Smith, a founding member of the GSS and long-time contributor to Federal statistics. The Wray Jackson Smith Scholarship (WJSS), co-sponsored with the Washington Statistical Society, the Caucus for Women in Statistics, Harris-Smith Institutes, Mathematica Policy Research, and Synectics for Management Decisions, Inc., is intended to reward promising young statisticians for their diligence, thereby encouraging them to consider a future in government statistics. Everyone is encouraged to seek out promising candidates and to urge them to apply.

Type of Project

The WJSS Award provides funding of \$1,000 for use in exploring any of a broad number of opportunities for furthering the development of a career related to government statistics. Applicants are encouraged to be creative in seeking support for a wide variety of uses, including:

- * Tuition, board, and books for courses or short courses
- * Conference attendance
- * Purchase of books, software, data sets, or other supporting materials for research projects related to government statistics.

Activities may relate to any level of government, including Federal, state, and local governmental units. They must be statistical in nature, focusing on data, methodology, analysis, or data presentation. Recent award winners have used the WJSS to fund attendance at the Joint Statistical Meetings, support continued public policy research, and to take short courses to better understand and analyze data for current research.

Application

To apply for a WJSS Award, the following information must be sent to the Wray Jackson Smith Scholarship Committee by April 15, 2008:

- * A completed WJSS Application Form (see: <<http://www.amstat.org/sections/sgovt/>> for current year's form and click on the format you want to use)
- * A proposal of activity to be funded
- * Academic transcript (for current/recent students) or job performance reviews for the past 2 years (for non-students) or equivalent proof of superior academic and/or professional performance
- * Two letters of recommendation.

Please send materials to:

*Wray Jackson Smith Scholarship Committee
c/o Michael P. Cohen
1615 Q Street NW #T-1
Washington DC 20009-6310 USA*

or electronically to: mpcohen@juno.com

Selection Process

The WJSS Committee, consisting of a total of three GSS and SSS members, will review each proposal, based on an established rating scheme, and select the awardee. Each application will be judged based on the following criteria:

- * Stage in Career
- * Past Performance
- * Quality of the Proposed Activity
- * Relevance of Activity to Government Statistics
- * Innovation/Ingenuity of the Proposed Project
- * Feasibility of Completion of Activity
- * Two Letters of Recommendation

Announcements of the awardees are made by June 1, 2008. All applicants are notified by e-mail.

Eligibility

The WJSS is targeted at students and persons early in their career in government statistics. Applicants must have a Bachelor's degree or equivalent level of education. Membership in the Government Statistics Section, Social Statistics Section, or in the ASA is not required. For more information, contact Mike Cohen by e-mail: mpcohen@juno.com

Wray Jackson Smith Scholarship Committee

The Committee for 2008 consists of Michael P. Cohen (Chair) mpcohen@juno.com, Robert A. Kominski Robert.A.Kominski@census.gov, and Stephen Campbell Stephen.Campbell@nist.gov. The Committee members thank Juanita Tamayo Lott for her invaluable advice and assistance.

HERRIOT AWARD NOMINATIONS SOUGHT

Nominations are sought for the 2008 Roger Herriot Award for Innovation in Federal Statistics. The award is intended to reflect the special characteristics that marked Roger Herriot's career:

- Dedication to the issues of measurement;
- Improvements in the efficiency of data collection programs; and
- Improvements and use of statistical data for policy analysis.

The award is not limited to senior members of an organization, nor is it to be considered as a culmination of a long period of service. Individuals at all levels within Federal statistical agencies, other government organizations, nonprofit organizations, the private sector, and the academic community may be nominated on the basis of their contributions.

The recipient of the 2008 Roger Herriot Award will be chosen by a committee comprising representatives of the Social Statistics and Government Statistics Sections of the American Statistical Association, and of the Washington Statistical Society. Roger Herriot was associated with and strongly supportive of these organizations during his career. The award consists of a \$1000 honorarium and a framed citation, which will be presented at a ceremony at the Joint Statistical Meetings in August 2008. The Washington Statistical Society will also host a seminar given by the winner on a subject of his or her own choosing.

The previous recipients of the Roger Herriot Award are Joseph Waksberg (Westat), Monroe Sirken (NCHS), Constance Citro (CNStat), Roderick Harrison (Census Bureau), Clyde Tucker (BLS), Thomas Jabine (SSA, EIA, CNStat), Donald Dillman (Washington State University), Jeanne Griffith (OMB, NCES, NSF), Daniel Weinberg (Census Bureau), David Banks (FDA, BTS, NIST), Paula Schneider (Census Bureau), Robert E. Fay III (Census Bureau), Nathaniel Schenker (NCHS), and Nancy Kirkendall (EIA).

Nominations for the 2008 award will be accepted beginning in February 2008. Nomination packages should contain:

- A cover letter from the nominator that should include references to specific examples of

the nominee's contributions to innovation in Federal statistics. These contributions can be to methodology, procedure, organization, administration, or other areas of Federal statistics, and need not have been made by or while a Federal employee.

- Up to six additional letters in support that demonstrate the innovative nature of each contribution.
- A current vita for the nominee, including contact information.

Both individual and group nominations may be submitted. The committee may consider nominations made for the 2007 award, but it encourages resubmission of those nominations with updated information.

For more information, contact Brian Harris-Kojetin, Chair, 2008 Roger Herriot Award Committee, at 202-395-7314, or bharrisk@omb.eop.gov. Completed packages must be received by April 1, 2008. Electronic submissions in MS-Word or as a "pdf" file are strongly encouraged. Please contact the chair if you need to make arrangements to fax or mail a nomination.

THE JEANNE E. GRIFFITH MENTORING AWARD

On receiving the Roger Herriot Award in June 2001, Jeanne E. Griffith said:

One of the most rewarding aspects (of Federal statistics) for me was the opportunity to promote creative activities and energies among my staff...When I have had the blessing to mentor young people in their careers, I have tried to emphasize...(that) only they, themselves, can make the most of (the)...chances that life presents.

Dr. Griffith died in August 2001 after working for more than 25 years in the Federal statistical system. Throughout her career, and especially in her latter senior management positions at the National Center for Education Statistics and the National Science Foundation, one of Jeanne's highest priorities was to mentor and encourage younger staff at all levels to learn, to grow, and to recognize and seize career opportunities as they came along.

The Jeanne E. Griffith Mentoring Award has been established to encourage mentoring of junior staff in the Federal statistical system. It is presented annually, beginning in 2003, to a supervisor who is nominated by co-workers and supervisors, and chosen by the Award Selection Committee.

The award is co-sponsored by the Interagency Council on Statistical Policy, the Council for Excellence in Government, the Washington Statistical Society, the Social Statistics and Government Statistics Sections of the American Statistical Association, and the Council of Professional Associations on Federal Statistics.

Nominations for 2008 will be accepted beginning in January 2008. The last date for submission of nominations is March 28, 2008, and the Award Committee will make its determination of the award winner by May 9, 2008. The award will consist of a \$1,000 honorarium and a citation, which will be presented at a ceremony arranged by the co-sponsors in June 2008.

The winning mentor will be selected for his or her efforts in supporting the work and developing the careers of junior staff. Examples of typical mentoring activities include:

- Advising junior staff to help them create career opportunities, networking skills, and contacts for growth and development;
- Counseling junior staff and providing resources to help develop their technical writing, analysis, presentation and organizational skills and knowledge;
- Encouraging junior staff growth and career development through attendance and oral presentations at meetings with higher level officials, staffs of other agencies, professional

associations, training courses, and conferences;

- Motivating junior staff and building self confidence through feedback on their efforts, being a listener when that is needed, and creating a caring and supportive environment;
- Serving as a role model for junior staff through professional expertise, information and insights, balancing collegial and personal roles, and including everyone across rank, race, ethnicity, and seniority.

For further information on the award, contact Ed Spar, Council of Professional Associations on Federal Statistics (COPAFS) by phone: 703-836-0404; fax: 703-836-0406; or by e-mail at copafs@aol.com. The nomination cover sheet and guidelines form-or a photocopy of it-should be attached to a nomination memorandum or letter. Forms can be obtained by contacting Ed Spar, or by downloading from the COPAFS website at <http://www.copafs.org>. All nominations should be returned to the Jeanne E. Griffith Mentoring Award Committee, c/o COPAFS, 2121 Eisenhower Avenue, Suite 200, Alexandria, VA 22314 no later than March 28, 2008.

Nominations Sought for 2008 Julius Shiskin Award

Nominations are invited for the annual Julius Shiskin Memorial Award for Economic Statistics. The Award is given in recognition of unusually original and important contributions in the development of economic statistics or in the use of statistics in interpreting the economy. Contributions are recognized for statistical research, development of statistical tools, application of information technology techniques, use of economic statistical programs, management of statistical programs, or developing public understanding of measurement issues. The Award was established in 1980 by the Washington Statistical Society (WSS) and is now cosponsored by the WSS, the National Association for Business Economics, and the Business and Economics Statistics Section of the American Statistical Association (ASA). The 2007 award recipient was Arthur Kennickell, Senior Economist and Head of the Microeconomic Surveys Unit at the Federal Reserve Board, for his leadership of the Federal Reserve's Survey of Consumer Finances and his achievements as an international expert on the design and implementation of household economic surveys.

Because the program was initiated many years ago, it is little wonder that statisticians and economists often ask, "Who was Julius Shiskin?" At the time of his death in 1978, "Julie" was the Commissioner of the Bureau of Labor Statistics (BLS) and earlier served as the Chief Statistician at the Office of Management and Budget (OMB), and the Chief Economic Statistician and Assistant Director of the Census Bureau. Throughout his career, he was known as an innovator. At Census he was instrumental in developing an electronic computer method for seasonal adjustment. In 1961, he published *Signals of Recession and Recovery*, which laid the groundwork for the calculation of monthly economic indicators, and he developed the monthly Census report *Business Conditions Digest* to disseminate them to the public. In 1969, he was appointed Chief Statistician at OMB where he developed the policies and procedures that govern the release of key economic indicators (Statistical Policy Directive Number 3), and originated a Social Indicators report. In 1973, he was selected to head BLS where he was instrumental in preserving the integrity and independence of the BLS labor force data and directed the most comprehensive revision in the history of the Consumer Price Index (CPI), which included a new CPI for all urban consumers.

Nominations for the 2008 award are now being accepted. Individuals or groups in the public or private sector from any country can be nominated. The award will be presented with an honorarium of \$750 plus additional recognition from the sponsors. A nomination form and a list of all previous recipients are available on the ASA Website at www.amstat.org/sections/bus_econ/shiskin.html or by writing to the Julius Shiskin Award Committee, Attn: Monica Clark, American Statistical Association, 732 North Washington Street, Alexandria, VA 22314-1943. Completed nominations must be received by April 1, 2008. For further information contact Steven Paben, Julius Shiskin Award Committee Secretary, at paben.steven@bls.gov.

WSS and Other Seminars

(All events are open to any interested persons)

February

- 6 Wed. **Statistical Analysis of Bullet Lead Compositions as Forensic Evidence**
- 7 Thurs. **Reducing Disclosure Risk in Microdata and Tabular Data**
- 13 Wed. **Conducting a 360 Degree Feedback Survey for Managers: Implementing Organization Culture Change**
- 14 Thurs. **National Household Travel Survey - Demographic Indicators of Travel Demand**

March

- 13 Thurs. **A Semiparametric Generalization of One-Way ANOVA**

Also available on the Web at the following URL: <http://www.scs.gmu.edu/~wss/>

Announcement

Capital Science 2008

The Washington Academy of Sciences and its Affiliates Present Capital Science 2008 to be held March 29-30, 2008.

On Saturday and Sunday, March 29-30, 2008, The Washington Academy of Sciences and its Affiliated Societies (including WSS) will hold the third in the series of biennial pan-Affiliate Conferences, Capital Science 2008. It will be held in the Conference Facility of the National Science Foundation in Arlington, VA at the Ballston Metro stop. With about 20 of the Affiliates participating, the Conference will serve as an umbrella for scientific presentations, seminars, tutorials, and talks. These pan-Affiliate Conferences underline the fact that the Washington, DC area is not only the political capital of the country but, in many respects, the nation's intellectual capital -- with several major universities and government laboratories that are the homes of an astonishing number of Nobel laureates.

Keep checking the Web site <http://www.washacadsci.org/capsci08/Index.htm> for more information as it becomes available.

Announcement

SIGSTAT Topics for Spring 2008

February 13, 2008: Survival Models in SAS: PROC LIFEREG Part 3
(<http://www.sas.com/apps/pubscat/bookdetails.jsp?pc=55233>)

Continuing the series of talks based on the book "Survival Analysis Using the SAS System: A Practical Guide" by Paul Allison begun in October 2007, we'll finish Chapter 4: Estimating Parametric Regression Models with PROC LIFEREG.

Topics covered are:

1. Left censoring and interval censoring
2. Generating predictions and hazard functions
3. The piecewise exponential model

March 12, 2008: Rasch measurement using SAS procedures

The Rasch measurement model is a latent-trait item response theory model that is being used increasingly to assess and develop multiple-indicator measures of social, psychological, and other phenomena outside of the educational testing field where most of the development of such models has occurred. Specialized software exists to fit response data to Rasch and related models, but for some applications, SAS procedures can also be used. Joint (or unconditional) maximum likelihood models (JML) can be estimated using SAS PROC LOGISTIC. A new STRATA option in PROC LOGISTIC makes it possible to estimate conditional maximum likelihood (CML) models. Marginal maximum likelihood (MML) models can be estimated using PROC NL MIXED. The talk will be presented by Mark Nord.

April 16, 2008: Survival Models in SAS: PROC PHREG Part 1
(<http://www.sas.com/apps/pubscat/bookdetails.jsp?pc=55233>)

Continuing the series of talks based on the book "Survival Analysis Using the SAS System: A Practical Guide" by Paul Allison begun in October 2007, we'll start Chapter 5: Estimating Cox Regression Models with PROC PHREG.

Topics covered are:

1. The proportional hazards model
2. Partial likelihood
3. Tied data

SIGSTAT is the Special Interest Group in Statistics for the **CPCUG**, the Capital PC User Group, and **WINFORMS**, the Washington Institute for Operations Research Service and Management Science.

All meetings are in Room S3031, 1800 M St, NW from **12:00 to 1:00**. Enter the South Tower & take the elevator to the 3rd floor to check in at the guard's desk.

First-time attendees should contact Charlie Hallahan, 202-694-5051, hallahan@ers.usda.gov, and leave their name. Directions to the building & many links of statistical interest can be found at the **SIGSTAT** website, <http://www.cpcug.org/user/sigstat/>.

Announcement

Seminar on Survey Respondent Incentives: Research and Practice

March 10, 2008
L'Enfant Plaza Hotel
Washington, DC

Hosted by the Council of Professional Associations on Federal Statistics

Incentive payments to survey respondents have been used extensively for many years to improve response rates. Considerable research evidence supports the value of monetary incentives to increase cooperation and improve the speed and quality of response in a broad range of data collection efforts. In 1992, a Symposium on Providing Incentives to Survey Respondents, hosted by the Council of Professional Associations on Federal Statistics (COPAFS), brought together a broad spectrum of survey research professionals from government, business, academia, and research organizations to focus on these issues in detail—to review the “state-of-the art.” (To read the report go to: www.members.aol.com/copafs/incentives.htm). Since that time, the use of respondent incentives in survey practice has increased dramatically across all sectors. Yet there has been no professional forum since the 1992 symposium that has sought to bring survey professionals together with a specific focus on these issues. The purpose of the proposed seminar is to fill that void.

The first session of the seminar will describe current practices in the use of respondent incentives across the three major domains of surveys: 1) surveys sponsored by federal agencies; 2) surveys conducted by academic investigators, including those funded by federal or other grants; and 3) surveys sponsored and conducted by private sector organizations and commercial establishments.

Session two will be a panel discussion bringing together survey research professionals who have conducted and are knowledgeable of major research, practices and trends on the use of respondent incentives in government, academic, commercial surveys. The theme of this session is: who, what, where, when, why and how do we pay? The panelists will focus in detail on what we are doing and what we know about the use of respondent incentives.

The concluding session will bring together a panel of survey researchers who have had considerable experience in the design and implementation of sample surveys. They will attempt to consolidate and synthesize the seminar discussion, identify common elements/themes, and suggest future directions for implementation and research.

Seminar Registration: \$125.00. For a copy of the program and registration information contact COPAFS at copafs@aol.com or call COPAFS at 703-836-0404 and ask for Edward Spar or Lee Ann Sklar. The program and registration form are also available at the COPAFS site at: www.copafs.org

Program Announcement

- Title:** Statistical Analysis of Bullet Lead Compositions as Forensic Evidence
- Speaker:** Karen Kafadar, Indiana University
- Chair:** Myron Katzoff, CDC/National Center for Health Statistics
- Date/Time:** February 6, 2008 (Wednesday) / 12:30 – 2:00 p.m.
- Location:** Bureau of Labor Statistics Conference Center. To be placed on the seminar attendance list at the Bureau of Labor Statistics, you need to email your name, affiliation and seminar name to wss_seminar@bls.gov (note that there is an underscore after 'wss') by noon at least two days in advance of the seminar or call 202-691-7524 and leave a message with this information. Bring a photo ID to the seminar. BLS is located at 2 Massachusetts Ave., NE. Take the Red Line to Union Station.
- Sponsor:** WSS Defense and National Security Section
- Abstract:** Since the 1960s, FBI has performed Compositional Analysis of Bullet Lead (CABL), a forensic technique that compares the elemental composition of bullets found at a crime scene to that of bullets found in a suspect's possession. CABL has been used when no gun is recovered, or when bullets are too small or fragmented to compare striations on the casings with those on the gun barrel.

The National Academy of Sciences formed a Committee charged with the assessment of CABL's scientific validity. The report, "Forensic Analysis: Weighing Bullet Lead Evidence" (National Research Council, 2004), included discussions on the effects of the manufacturing process on the validity of the comparisons, the precision and accuracy of the chemical measurement technique, and the statistical methodology used to compare two bullets and test for a "match". The report has been cited in recent appeals brought forth by defendants whose trials involved bullet lead evidence (60 Minutes, 11/18/2007; Washington Post, 11/18-19/2007). This talk will focus on the statistical analysis: the FBI's methods of testing for a "match", the apparent false positive and false negative rates, the FBI's clustering algorithm ("chaining"), and the Committee's recommendations. Additional analyses on data later made available, and the use of forensic evidence in general, also will be discussed.

Program Announcement

Title: Reducing Disclosure Risk in Microdata and Tabular Data

Chair: Sonya Vartivarian, Mathematica

Speakers: William Winkler, U.S. Census Bureau
Ramesh Dandekar, U.S. Department of Energy

Date/Time: February 7, 2008 (Thursday) / 12:30 – 2:00 p.m.

Location: Bureau of Labor Statistics, Conference Center. To be placed on the seminar attendance list at the Bureau of Labor Statistics you need to e-mail your name, affiliation, and seminar name to wss_seminar@bls.gov (underscore after 'wss') by noon at least two days in advance of the seminar or call 202-691-7524 and leave a message. Bring a photo ID to the seminar. BLS is located at 2 Massachusetts Avenue, NE. Use the Red Line to Union Station.

Sponsor: Methodology Program, WSS

Abstracts:

Analytically Valid Discrete Microdata Files and Re-identification (Winkler)

With the exception of synthetic data (e.g., Reiter 2002, 2005) and a few other methods (Kim 1986, Dandekar, Cohen, and Kirkendal 2002), masking methods and resultant public-use files are seldom justified in terms of valid analytic properties. If a file has valid analytic properties, then the analytic characteristics can be used as a starting point for re-identification using analytic methods only (Lambert 1993, Fienberg 1997). In this paper, we describe a general method for building a synthetic data file having valid analytic properties. If we use general modeling/edit/imputation methods (Winkler 2007a, 2007b, 2008) that allow additional convex constraints, then we can create synthetic data with nearly identical analytic properties and with significantly reduced re-identification risk.

Comparative Evaluation of Seven Different Sensitive Tabular Data Protection Methods Using a Real Life Table Structure of Complex Hierarchies and Links (Dandekar)

The practitioners of tabular data protection methods in federal statistical agencies have some familiarity with commonly used table structures. However, they require some guidance on how to evaluate appropriateness of various sensitive tabular data methods when applied to their own table structure. With that in mind, we use a real life “typical” table structure of moderate hierarchical and linked complexity and populate it with synthetic micro data to evaluate the relative performance of four different tabular data protection methods. The methods selected for the evaluation are: 1) lp-based classical cell suppression; 2) lp-based CTA (Dandekar 2001); 3) network flow-based cell suppression as implemented in DiAna, a software product made available to other Federal statistical agencies by the US Census Bureau; 4) a micro data level noise addition method documented in a US Census Bureau research paper; 5) Hybrid EM/IPF based CTA method; 6) simplified CTA method; 7) conventional rounding based method.

Program Announcement

- Title:** **Conducting a 360 Degree Feedback Survey for Managers: Implementing Organization Culture Change**
- Speaker:** Eduardo S. Rodela, Ph.D., Rodela Consulting Group, Fairfax, Virginia
- Chair:** Mel Kollander
- Date/time:** February 13, 2008 (Wednesday) / 12:30 - 1:30 p.m.
- Location:** Bureau of Labor Statistics Conference Center. To be placed on the seminar list attendance list at the Bureau of Labor Statistics you need to e-mail your name, affiliation, and seminar name to wss_seminar@bls.gov (underscore after 'wss') by noon at least 2 days in advance of the seminar or call 202-691-7524 and leave a message. Bring a photo ID to the seminar. BLS is located at 2 Massachusetts Avenue, NE. Use the Red Line to Union Station.
- Sponsor:** WSS Agriculture and Natural Resources Section
- Abstract:** A nationwide 360 Degree Feedback (Multi-Source) Pilot for Managers was conducted in a federal agency. The multi-source work group conducted an on-line survey asking managers to rate themselves on fifty two questions addressing important managerial behaviors (e.g., strategic planning skills). The number of managers participating in the study was around 500. In addition to having the managers rate themselves, the managers' supervisors, peer group, and employees rated the manager as well. While the pilot work group did not have access to survey data, a number of lessons were learned about administering a multi-source feedback pilot for managers. The discussion will focus on the survey methodology and lessons learned.
- e-mail: esrodela@cox.net

Program Announcement

- Title:** National Household Travel Survey - Demographic Indicators of Travel Demand
- Speaker:** Heather Contrino, Federal Highway Administration, Department of Transportation
- Chair:** Promod Chandhok, RITA/Bureau of Transportation Statistics
- Date/Time:** February 14, 2008 (Thursday) / 12:30 - 2:00 p.m.
- Location:** Bureau of Labor Statistics Conference Center. Bring a photo ID to the seminar. BLS is located at 2 Massachusetts Ave., NE. Take the Red Line to Union Station.
- Sponsor:** Social & Demographic Statistics Section
- Abstract:** Since 1969, the National Household Transportation Survey (NHTS) has collected information about the U.S. population's daily travel behavior. The NHTS connects detailed trip characteristics to vehicle information, geography, and household and person demographic data. The study is designed primarily to obtain behavioral data to understand demand data needed for performance measurement, policy analyses, and program development and prioritization.

This presentation will provide an overview of information included in the NHTS and how demographic information plays an important role in assessing programs, policies, and in forecasting future demand. The discussion will include an overview of methods, emerging challenges, and example applications of the data, including the integration with other data sources such as the ACS.

Program Announcement

- Title:** A Semiparametric Generalization of One-Way ANOVA
- Speaker:** Benjamin Kedem, University of Maryland
- Chair:** Myron Katzoff, CDC/National Center for Health Statistics
- Date/Time:** March 13, 2008 (Thursday) / 12:30 – 2:00 p.m.
- Location:** Bureau of Labor Statistics Conference Center. To be placed on the seminar attendance list at the Bureau of Labor Statistics, you need to email your name, affiliation and seminar name to wss_seminar@bls.gov (note that there is an underscore after 'wss') by noon at least two days in advance of the seminar or call 202-691-7524 and leave a message with this information. Bring a photo ID to the seminar. BLS is located at 2 Massachusetts Ave., NE. Take the Red Line to Union Station.
- Sponsors:** WSS Public Health and Biostatistics and Defense and National Security Sections
- Abstract:** Under the classical one-way ANOVA, with normal data and equal variances, the problem is to test the equality of means. Then, under the hypothesis of normality, the problem reduces to testing equality of distributions. By relaxing the normal assumption, we show how to test for equi-distribution directly and obtain tests that rival the usual t and F tests. The key idea is to "tilt" a reference distribution. This provides estimates for all the distributions from which we have data, using a modified kernel density estimate which is superior to the traditional kernel estimate. The attractive feature of the semiparametric generalization is that it provides BOTH powerful tests and graphical displays of all the estimated distributions. This will be demonstrated using gene expression data. The "tilting" idea has numerous other statistical applications. We shall briefly outline several recent applications.

JPSM SHORT COURSES

JPSM HOME PAGE: <http://www.jpsm.org> Click on "Short Courses"

INFORMATION, REGISTRATION, PAYMENT AND CANCELLATION:
<https://projects.isr.umich.edu/jpsm/>

SPONSOR AFFILIATES: <https://projects.isr.umich.edu/jpsm/sponsorlist.cfm>

February 26-27, 2008 (Open for registration) Introduction to Survey Estimation
David Morganstein and Richard L. Valliant
Registration Deadline: February 12, 2008
Information: <https://projects.isr.umich.edu/jpsm/materials/2008-0226.html>

March 11-12, 2008 (Not yet open for registration) Survey Methods for Businesses and Organizations
Paul Biemer, David Cantor and Robert Gaddie

March 27-28, 2008 (Open for registration) Guidelines for Writing Questions for Standardized
Measurement: A Workshop
Nora Cate Schaeffer
Registration Deadline: March 13, 2008
Information: <https://projects.isr.umich.edu/jpsm/materials/2008-0327.html>

April 17-18, 2008 (Open for registration)
Cognitive Interviewing: A Hands-on Approach
Gordon B. Willis
Registration Deadline: April 3, 2008
Information: <https://projects.isr.umich.edu/jpsm/materials/2008-0417.html>

May 5-6, 2008 (Open for registration)
Sampling and Estimation for Establishment Surveys
Richard L. Valliant and Phill Kott
Registration Deadline: April 25, 2008
Information: <https://projects.isr.umich.edu/jpsm/materials/2008-0506.html>

May 20-21, 2008 (Open for registration)
Applied Structural Equation Modeling
Patrick Sturgis
Registration Deadline: May 6, 2008
Information: <https://projects.isr.umich.edu/jpsm/materials/2008-0520.html>

May 27-28, 2008 (Not yet open for registration) Focus Groups from Start to Finish David Morgan

Primary Funding for JPSM is from the Interagency Council on Statistical Policy

JPSM Short Course

FOCUS GROUPS FROM START TO FINISH

A two-day short course sponsored by the Joint Program in Survey Methodology

MAY 27-28, 2008

Presented at the Sheraton Crystal City Hotel, Arlington VA

DAVID L. MORGAN

Portland State University

COURSE OBJECTIVES

Focus groups are a qualitative method that has found wide acceptance as an efficient and helpful way to understand people's attitudes, beliefs, and experiences. Among those who use focus groups are: survey researchers who wish to design well-worded questionnaires; program intervention teams to who want to understand the people they serve and influence their behavior; managers from government agencies and private businesses who want to discover how their "customers" evaluate their services, as well as how to improve their services and raise customer satisfaction; market researchers who are interested in understanding consumer preferences; and political researchers who want to explore voters' responses to candidates and their messages.

This seminar will introduce participants to focus group methodology and how it can be applied to serve a variety of purposes. Participants will learn: who to choose as participants and how to recruit them; how to design an appropriate set of questions for a group interview; the basic skills involved in moderating focus group discussions; and how to analyze and report on the data from focus groups. In addition, the course will cover the issues involved in both contract with professional focus group providers and conducting your own focus groups

The instructor will give mini-lectures, conduct example focus groups, and lead exercises. The overall goal is to provide practical information.

WHO SHOULD ATTEND

This short course is designed for people who use or who might like to use focus groups as well as people who evaluate reports based on focus group findings. Those who might benefit from this course include: project managers who are planning new initiatives or programs; survey researchers who wish to use qualitative methods in either the development of their survey tools or the interpretation of their quantitative results; those who are responsible for customer satisfaction programs or cultural diversity efforts; anyone who needs greater insights into the experiences, feelings, and preferences of either the general public or members of their own organization. It is designed to meet the need of individuals in government and not-for-profit organizations, as well as those in industry.

THE INSTRUCTOR

David L. Morgan teaches at Portland State University, where he holds an appointment as a University Professor, along with an adjunct appoint in the Department of Sociology. He received his Ph.D. in Sociology from the University of Michigan. Dr. Morgan is internationally recognized for his several books on focus groups, including the recent Focus Group Kit (with Richard Krueger) and the edited collection Successful Focus Groups. In addition to focus groups, he is also interested in research that combines qualitative and quantitative methods, including the use of focus groups in conjunction with both survey research and program evaluation.

TENTATIVE SCHEDULE**TUESDAY, MAY 27, 2008**

| | |
|---------------|---|
| 7:45 - 8:30 | Registrant Check-In and Continental Breakfast |
| 8:30 - 9:00 | Introduction and Course Overview |
| 9:00 - 10:00 | Demonstration focus group |
| 10:00 - 10:15 | Morning Break |
| 10:15 - 11:00 | Deciding to Use Focus Groups |
| 11:00 - 12:00 | Question and Answer Session |
| 12:00 - 1:00 | Lunch Break |
| 1:00 - 2:00 | Group Composition and Recruitment |
| 2:00 - 2:45 | Asking Questions in Focus Groups, Part #1 |
| 2:45 - 3:00 | Afternoon Break |
| 3:00 - 3:45 | Asking Questions in Focus Groups, Part #2 |
| 3:45 - 4:30 | Exercise: Writing an Interview Guide |
| 4:30 | Adjourn |

WEDNESDAY, MAY 28, 2008

| | |
|---------------|---|
| 7:45 - 8:30 | Registrant Check-In and Continental Breakfast |
| 8:30 - 10:00 | Moderating Focus Groups, Part #1 |
| 10:00 - 10:15 | Morning Break |
| 10:15 - 11:30 | Moderating Focus Groups, Part #2 |
| 11:30 - 12:00 | Question and Answer Session |
| 12:00 - 1:00 | Lunch Break |
| 1:00 - 2:45 | Analyzing and Reporting Data, Part #1 |
| 2:45 - 3:00 | Afternoon Break |
| 3:00 - 3:45 | Analyzing and Reporting Data, Part #2 |
| 3:45 - 4:30 | Question and Answer Session |
| 4:30 | Adjourn |

COURSE MATERIALS

Registrants will be provided with a course lecture notebook.

MEALS

JPSM group continental breakfasts, lunches and breaks are included in the course fee.

FEES

The registration fee for staff at sponsoring agencies and affiliates is \$600, \$600 for full-time university students, and \$810 for other participants. Payment by credit card is required. Post registration payment may be done online using the registration number or by calling (800) 937-9320. Payment is required by May 13, 2008.

REGISTRATION

Online registration is required. Confirmation of acceptance will be sent after the registration form has been processed. Registration is not firm until you receive an acceptance email. The email will include directions to the course. The automatic web registration number is not an acceptance letter. Payment by credit card is required. Post registration payment may be done online using the web generated registration number or by calling (800) 937-9320. The registration deadline is May 13, 2008.

CANCELLATION

Please notify JPSM as soon as possible if you need to cancel your registration. Cancellation requests should be done online. You will be fully reimbursed if you cancel by May 13, 2008. Cancellation May 14-19, 2008 will require a \$100 administrative fee, the remainder will be reimbursed. Cancellation on or after May 20, 2008 is subject to the full fee amount.

SHERATON CRYSTAL CITY HOTEL

1800 Jefferson Davis Highway, Arlington, Virginia 22202

Phone: (703) 486-1111 Fax: (703) 769-3970 Room Reservations: (888) 627-8209

The Sheraton Crystal City Hotel is located in the “Crystal City” business district of Arlington, with nearby access to the Crystal City Metro Stop. Located at the intersection of 18th and Eads Street the hotel is 1 mile from the Ronald Reagan National Airport. Information, directions, and times will be sent with the acceptance email letter.

OVERNIGHT ROOMS

Individuals are responsible for making their own overnight room reservations and for payment. A limited number of rooms have been reserved for the JPSM Short Course at a rate of \$249 per night. The “cut-off date” for accepting reservations into this room block is April 26, 2008. Contact the hotel’s reservation department at (888) 627-8209. The registrant must identify themselves as part of the JPSM group.

FELLOWSHIPS

The Joint Program in Survey Methodology strives to increase the number of survey professionals from groups traditionally under-represented in the field. As part of this effort, a limited number of competitive fellowships are available to African-Americans, Latinos, Hispanic Americans, and Native American Indians for the short course. The registrant must be a US citizen or permanent resident. The applicants should submit:

1. A 500-word essay describing their reasons for wanting to attend this short course and how their participation will enhance their chosen career path. The essay should indicate the applicant’s background (i.e. African-American, Latino, Hispanic American, or Native American Indian).
2. A recommendation written by a person knowledgeable about the applicant’s aptitude and interest in survey methodology.
3. The course online registration form.

If you are applying for a fellowship, please be certain to register early. Applications are due before April 29, 2008. JPSM will evaluate the applications and inform the successful applicants by May 6, 2008. The fellowship covers the registration fee, materials to be distributed during the course and the JPSM group continental breakfasts, lunches and breaks.

JPSM CITATION PROGRAMS

The citation programs are built around the JPSM short courses. The JPSM Citation in Introductory Survey Methodology is designed to provide the working professional and interested students with state-of-the-art knowledge about current principles and practices for conducting complex surveys combined with practical skills of day-to-day utility. The JPSM Citation in Introductory Economic Measurement is designed for professional staff requiring a grounding in the principles and practices of economic measurement. Completion of the citation programs involves taking a semester-length JPSM credit-bearing course and eight JPSM short courses, of which four are specified core courses. For information on the Certificate and Citation Programs visit the website at <http://www.jpsm.org> or call (301) 314-7911.

INQUIRIES

Questions for this course should be directed to the JPSM Short Course, Institute for Social Research, University of Michigan, 426 Thompson Street, Room 4050, Ann Arbor, MI 48104-2321, Phone: (800) 937-9320, Fax: (734) 764-8263, Email: jpsmshort@isr.umich.edu .

TAX IDENTIFICATION: 38-6006309

JPSM HOME PAGE: <http://www.jpsm.org> Click on “Short Courses”

JPSM SPONSOR AFFILIATE LIST: <https://projects.isr.umich.edu/jpsm/sponsorlist.cfm>

COURSE LISTS, INFORMATION, REGISTRATION, PAYMENT AND CANCELLATION:
<https://projects.isr.umich.edu/jpsm/>

Primary Funding for JPSM is from the Interagency Council on Statistical Policy.

Students' Corner

Some time ago, my classmate Yang Yang (the one who solved the Math Challenge) asked me whether I knew about LaTeX. As a full-time student, she was already working on her thesis, and was required to do it in LaTeX. I had already been thinking that an introduction to LaTeX might be a good topic for this column. So for this month's installment of the Students' Corner, I'll report on what I have learned about LaTeX.

As is often done these days, I started my investigation of LaTeX using Google and Wikipedia. I quickly found that there are many LaTeX tutorials out there, but that they assumed that you were able to compile LaTeX on your computer. I also learned that *pdflatex* is a program that converts LaTeX files to PDF files, and that it is already installed on the Linux machines that I have access to. But I wanted to be able to run LaTeX at home on my own computer; I didn't want to have to log onto the university's computer (even remotely) to run *pdflatex*. And I suspect that, like me, most of my fellow students have Windows rather than Linux running on their home PCs or on their laptops.

Therefore, I'll present here a short tutorial just on getting started with the mechanics of compiling a raw LaTeX file into a finished PDF rendering, *on a Windows PC*. I'm hoping that this will enable you to start the following "loop": edit a raw LaTeX file, compile it into a PDF file, view the results for possible errors and/or desired modifications, and then edit the LaTeX file again, and iterate the process. In this tutorial, we'll install two software packages: (1) MiKTeX, which is a LaTeX compiler; and (2) TeXnicCenter, which provides a graphical user interface to MiKTeX. Afterwards, I'll give references for learning more on LaTeX itself.

First, a bit of background that I have gathered from a brief Google/Wikipedia investigation. Donald Knuth, a Stanford mathematician and computer scientist, invented TeX in the late 1970's/early 80's, a computer-based typesetting system. TeX is very powerful and complex, and therefore has a steep learning curve. Shortly thereafter, Leslie Lamport, also a mathematician with a computer science bent, devised a set of macros built on top of TeX that simplifies the user's interface to TeX. This set of macros is called LaTeX, which is pronounced "Lay-Teck." LaTeX is very good for scientific publication, because it enables you to generate publication-quality renderings of mathematical equations, and because it helps you manage your references. One of my professors (Lei Nie, now with the FDA) even uses LaTeX rather than PowerPoint to create slide presentations for his lectures.

Here are the steps that I used to install MiKTeX and TeXnicCenter on my Windows laptop:

1. Install MiKTeX. I decided to go with the 2.7 beta version of MiKTeX. Click on this link to download the 2.7 distribution:

<http://prdownloads.sourceforge.net/miktex/basic-miktex-2.7-beta-5.exe?download>

This link will probably be good for only the next few months; my guess is that the link will change once 2.7 becomes official. If the above link no longer works, go instead to the home page for MiKTeX and search for the download page:

<http://www.miktex.org>

After you've downloaded the MiKTeX installer, run it, perhaps by double-clicking on its icon or perhaps by selecting "Open" in your downloader. Install it in an appropriate directory; for example, I installed mine under "C:\Program Files\MiKTeX 2.7". (Note: you'll need administrator privileges to install software on a computer. If you attempt to install software without having administrator privileges, you'll probably get an error message; in this case, you'll need to ask your system administrator to do the installation for you.)

2. Install TeXnicCenter. Here I decided to go with the beta version, too. Click on this link to download the 1 beta 7.01 distribution:

http://prdownloads.sourceforge.net/texniccenter/TXCSetup_1Beta7_01.exe?download

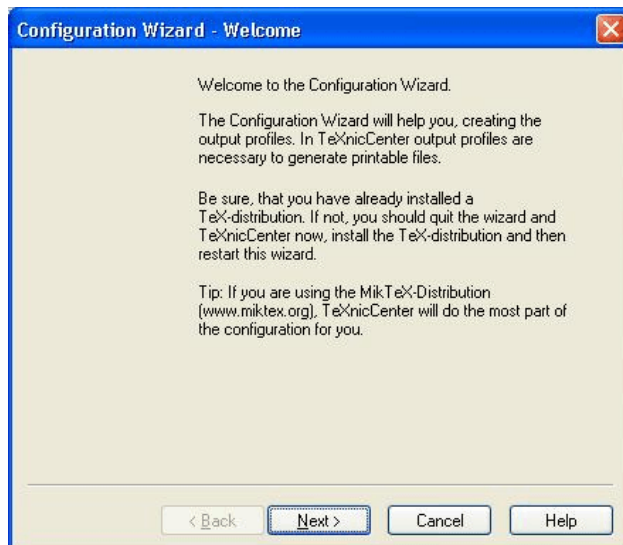
And here's the main home page for TeXnicCenter, for the time when the above link no longer works:
<http://www.texniccenter.org/>

As with MiKTeX, run the TeXnicCenter installer, perhaps by double-clicking on its icon, and install it in an appropriate directory. For example, I installed mine under "C:\Program Files\TeXnicCenter."

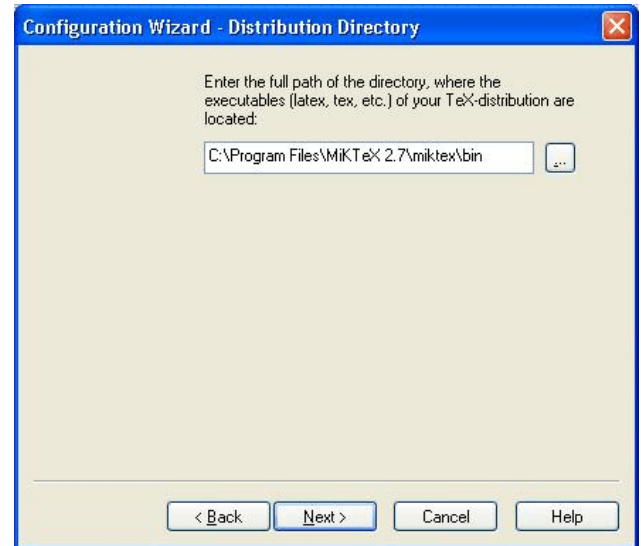
3. Start up TeXnicCenter. You should see a window that looks like the following picture. You will be greeted by a "Tip of the Day" window, shown below to the left. Read the tip, then dismiss the window by clicking on the Close button. (Interestingly, one of these tips informed me that a Windows implementation of *pdflatex* comes with the MiKTeX distribution. I did indeed find it in MiKTeX's 'bin' subdirectory; see (b) in the next step.)

4. Configure TeXnicCenter. You need to do this only once.

(a) **Configuration Wizard Welcome.** This window (shown below, to the right) comes up automatically the first time you run TeXnicCenter. Quickly read the text in this window, then click on the Next button.

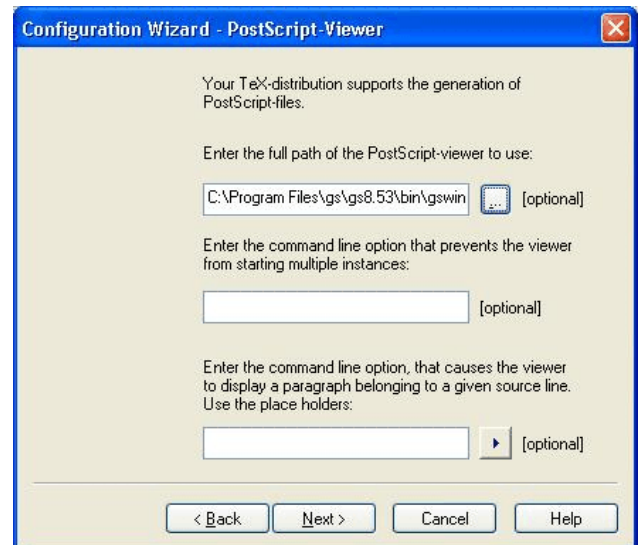
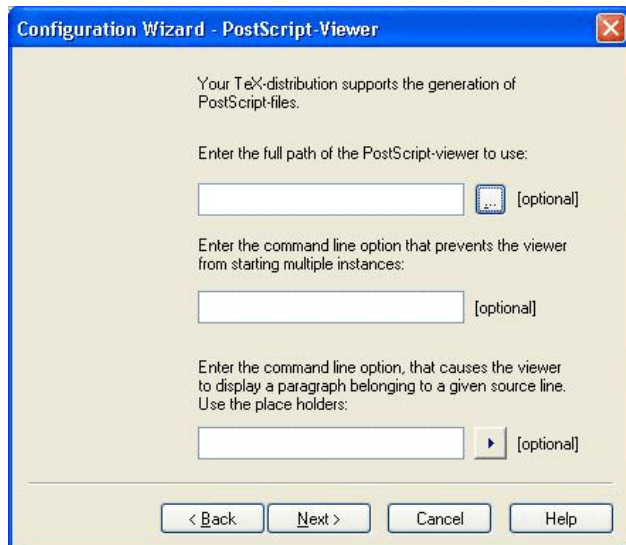


(b) **Distribution Directory.** This is the most important step in TeXnicCenter's configuration. Type in the directory where the MiKTeX executable files are to be found; or click on the little square button next to the entry field (the button with the ellipses "..."), and browse to the MiKTeX 'bin' folder. Since I had installed MiKTeX in "C:\Program Files\MiKTeX 2.7", the appropriate location for me to type in was "C:\Program Files\MiKTeX 2.7\miktex\bin", as shown in the figure. If you've installed MiKTeX in the same folder as I have, this will be what you need to type in. (At first, I had typed in the main MiKTeX installation folder itself "C:\Program Files\MiKTeX 2.7" here. But the TeXnicCenter installer complained that it couldn't find executables such as latex.exe, so I used the Windows Search function to find the MiKTeX subfolder containing .exe files.) Then click on the Next button.



(c) **PostScript-Viewer.** There are three entry fields in this window (shown below, to the left), all of them optional. If you don't have a PostScript viewer or don't know what one is, just click on the Next button.

I happened to have a PostScript viewer (Ghostscript) installed on my computer, so I have filled in the first entry field indicating where to find the it, as shown in the figure below, to the right. But it's okay to leave this field blank, because it is not crucial. (You will still be able to generate PDF files to view.)



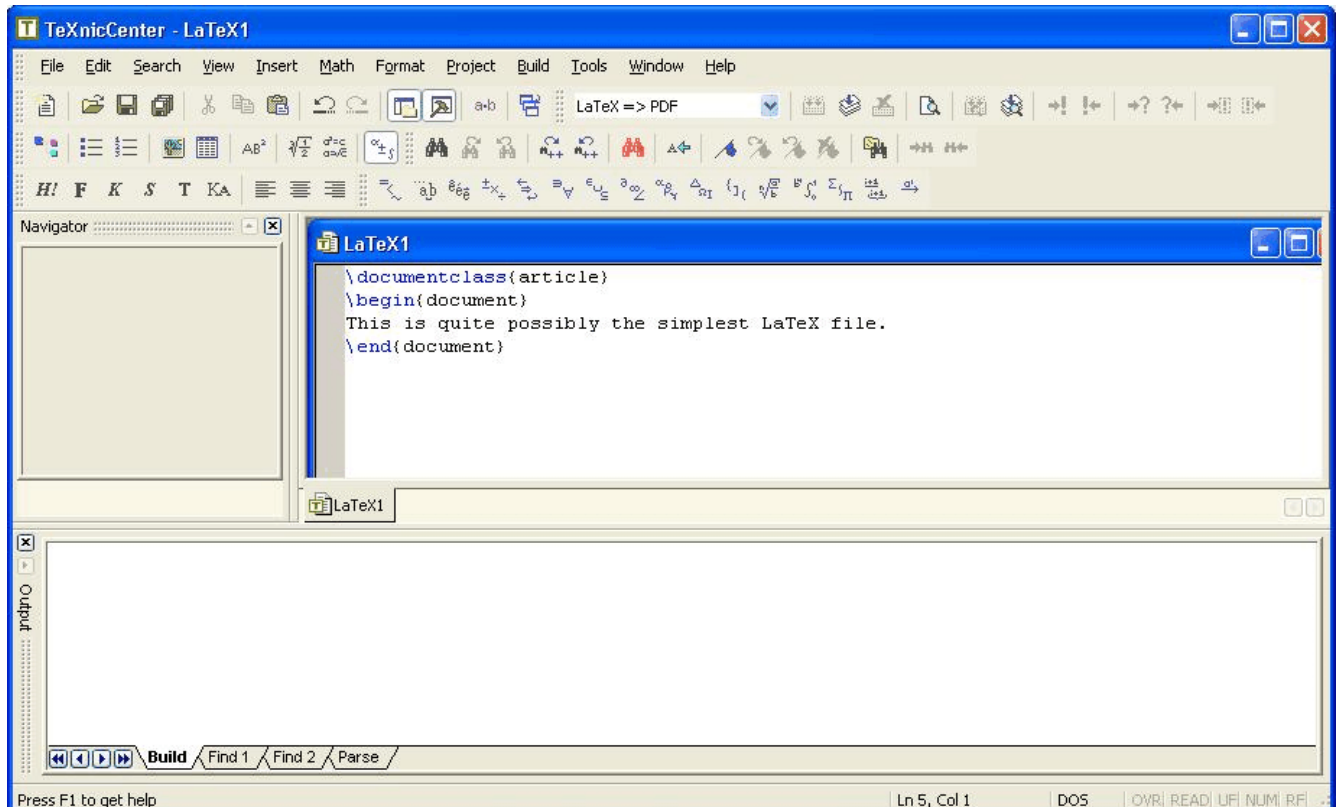
(d) **Finish.** Finally, you get the Finish window. Quickly read the text in this window just for your information, then click on the Finish button.



5. **Enter LaTeX content.** Open a new LaTeX document by selecting File --> New in the TeXnicCenter window. This will pop up a new window in TeXnicCenter named "LaTeX1". Type in (or simply cut and paste) the following LaTeX code into the "LaTeX1" window.

```
\documentclass{article}
\begin{document}
This is quite possibly the simplest LaTeX file.
\end{document}
```

Select File --> Save, and save this tiny LaTeX document to a file named "sample.tex".



6. Compile the LaTeX content.

Select LaTeX => PDF (see the black arrow in the preceding figure). Then select Build --> Current File --> Build.

Any error messages will be shown in the log window at the bottom of the TeXnicCenter window (similar to the Log window in SAS). If all went well, a new file named "sample.pdf" will be created in the same directory where you saved "sample.tex". Open it as you would any PDF file and inspect the contents.

And that's all there is to it! Now that you've learned the mechanics of converting a raw .tex file to a finished PDF file, the next step is to learn more about LaTeX itself, and for this I must refer you to other sources, including the tutorials that I found online. One place to start looking is at the Comprehensive TeX Archive Network (CTAN; reminds me of CPAN and CRAN):

<http://www.ctan.org/> Also, you can find several LaTeX tutorials online by doing a Google search with the following search parameters: latex (primer OR introduction OR tutorial) or perhaps latex (primer OR introduction OR tutorial) filetype:pdf

to restrict the search only to PDF documents. See especially the tutorial by David R. Wilkins.

<http://www.maths.tcd.ie/~dwilkins/LaTeXPrimer/GSWLaTeX.pdf>

Also see the review by Nick Shah:

<http://medbiograd.sa.utoronto.ca/pdfs/vol3num2/30.pdf>

(Links given above were good as of December 16, 2007; as always, be advised that links on the web are ephemeral.)

If you're writing a thesis, check out the extensive LaTeX learning materials that the folks at Iowa State have developed: <http://css.ait.iastate.edu/TeX/>

Examples are always useful; a template for Iowa State's thesis format can be found here:

<http://css.ait.iastate.edu/TeX/isuthesis.html>

See also the tutorial "Writing a Thesis with LaTeX" by Joe Struss:

<http://css.ait.iastate.edu/TeX/TeX/thesis1c.pdf>

For more on rendering mathematical equations, see the "Short Math Guide for LaTeX" by Michael Downes: <ftp://ftp.ams.org/pub/tex/doc/amsmath/short-math-guide.pdf>

George Grätzer's "Math into LaTeX": <http://tex.loria.fr/general/mil.pdf>

and Scott Pakin's "The Comprehensive LaTeX Symbol List":

<http://www.cs.cmu.edu/~shaoml/symbols-a4.pdf>

For a lengthier treatment on LaTeX, see "The Not So Short Introduction to LaTeX," by Oetiker, Partl, Hyna, and Schlegl; Yang says that she relied heavily on this particular document.

<http://www.ctan.org/tex-archive/info/lshort/english/lshort.pdf>

Also consider Leslie Lamport's book "LaTeX: A Document Presentation System".

As an aside, a co-worker of mine brought to my attention a LaTeX editor called "LEd":

<http://www.latexeditor.org/>

LEd appears to be an alternative to TeXnicCenter; you will still need to install MiKTeX first.

Now, I am admittedly very much a LaTeX newbie, but I hope that what I have learned and presented here will be of use to at least some my fellow students. And I do encourage my fellow students to give LaTeX a try. It is a good thing to know how to do. And you might even be required to use it for your thesis!

That's all for this month. If you have any feedback on this column or ideas for future topics, please email me at jmm97@georgetown.edu. As always, your thoughts will be greatly appreciated.

Joe Maisog

Georgetown University / Medical Numerics

Employment

As a service to local statisticians, *WSS News* provides notification of employment opportunities and description of those seeking employment here in the Washington, DC, area. Readers are encouraged to take advantage of this feature of the newsletter. The deadline for inserting notices is five (5) weeks before the publication date. Those interested should email or call Anne Peterson, at apeterson@insightpolicyresearch.com or (703) 373-6645.

CLINICAL TRIAL BIOSTATISTICIANS M.S. and Ph.D. Level Positions

With an opportunity for substantial leadership responsibility in studies of international public health import.

The Biostatistics Center of The George Washington University, founded in 1972, is a leader in the statistical coordination of clinical trials conducted by the National Institutes of Health. We enjoy over \$45 million per year of NIH research funding for major studies in cardiovascular disease, diabetes, maternal/fetal medicine, osteoporosis, urology, and the genetic basis for various diseases. The center has a staff of over 100 with 27 biostatisticians/epidemiologists, including 10 faculty. We are recruiting M.S. and Ph.D. level staff to participate in these and future studies. Please visit our web site (below).

Master's Level Research Positions: These positions require a Master's in Biostatistics or Statistics and 1-5 years experience in analysis, supervision of data management and study design for biomedical applications. Good written and oral communication skills, and detailed knowledge of SAS required. Send CV to address below.

Assistant to Full Research Professorial Positions are available immediately to serve as Co-Investigator or Principal Investigator (Project Director) and to provide statistical direction of the design, conduct and analysis of studies and the conduct of methodologic research to meet the projects needs. We are seeking individuals who want to join a highly competent team of academic biostatisticians and epidemiologists; who desire to contribute to the design and analysis of major medical studies, seek substantive scientific and statistical responsibility, enjoy interacting with medical investigators; take pride contributing to the publication of major papers in leading medical journals, and desire to make an impact on the public health. Our faculty also participate in graduate programs in biostatistics, epidemiology and statistics which afford opportunities for teaching at the graduate level. The research projects also provide an environment rich in methodological problems, with opportunities for collaboration with research active Center faculty and graduate students.

Minimum Position Requirements: Doctorate in Biostatistics, Statistics or Epidemiology, or alternatively an M.D. or Ph.D. in Biological Science, Physical Science or Computer Science with a Masters in Biostatistics or Statistics, 1-5 years' experience with clinical trials, especially study design and statistical analysis of study results using SAS, excellent oral and written English communication skills, and supervisory experience.

Application Procedures: Applicants must send a Curriculum Vitae and three letters of reference; a letter to include a synopsis of their role in collaborative medical research that has led to medical scientific presentation or publication and a statement of career purpose indicating their career goals and how this position can help you achieve those goals; and applicants for Assistant Research Professor positions must send an Official Transcript of graduate coursework leading to the doctoral degree to: Sarah Fowler, Research Professor and Director, The George Washington University Biostatistics Center, 6110 Executive Blvd., Suite 750, Rockville, MD 20852.

[HTTP://WWW.BSC.GWU.EDU](http://www.bsc.gwu.edu)

Review of applications is ongoing until the positions are filled. Rank/position title and salary commensurate with experience and qualifications. Tuition benefits for employees (including Ph.D. in Statistics, Biostatistics and Epidemiology) and for spouse and dependent children.

All research and regular faculty at the rank of Assistant Professor in Biostatistics or Statistics may apply for the Samuel W. Greenhouse Biostatistics Research Enhancement Award. For a period of 1 year, the award will provide 20% effort for methodological research and a discretionary fund to support professional activities, travel to professional meetings, supplies and equipment. Applicants for the research faculty position may also apply for the Greenhouse Award while their faculty application is being considered. For complete information including Award Application Materials Requirements, please visit our website at: www.bsc.gwu.edu.

The George Washington University is an Equal Opportunity/Affirmative Action employer

Survey Sampling Statistician

WESTAT: AN EMPLOYEE-OWNED RESEARCH CORPORATION

Westat is an employee-owned corporation headquartered in the suburbs of Washington, DC (Rockville, Maryland). We provide statistical consulting and survey research to the agencies of the U.S. Government and to a broad range of business and institutional clients. With a strong technical and managerial staff and a long record of quality research, Westat has become one of the leading survey research and statistical consulting organizations in the United States.

Our company was founded in 1961 by three statisticians. The current staff of more than 1,800 includes over 60 statisticians, as well as research, technical, and administrative staff. In addition, our professional staff is supported by data collection and processing personnel situated locally and in field sites around the country. The work atmosphere is open, progressive, and highly conducive to professional growth.

Our statistical efforts continue to expand in areas such as the environment, energy, health, education, and human resources. Westat statisticians are actively involved in teaching graduate-level courses in statistical methods and survey methodology in collaborative arrangements with area colleges and universities.

We are currently recruiting for the following statistical position:

Survey Sampling Statistician (Job Code WSS/DRM/7001)

Three or more years of relevant experience in sample design and selection, frames development, weighting, imputation, and variance estimation. Must have a master's or doctoral degree in statistics and have excellent writing skills. Coursework in sample survey design is highly desirable.

Westat offers excellent growth opportunities and an outstanding benefits package including life and health insurance, an Employee Stock Ownership Plan (ESOP), a 401(k) plan, flexible spending accounts, professional development, and tuition assistance. For immediate consideration, please send your cover letter, indicating the Westat Job Code, and resume by one of the following methods to:

Job Code is **REQUIRED** to apply.

Westat • Attn: Resume System • 1650 Research Boulevard • Rockville, MD 20850-3195

Email: resume@westat.com • FAX: (888) 201-1452

Equal Opportunity Employer. www.westat.com

**MATHEMATICAL STATISTICIANS, GS-1529-14
U.S. CONSUMER PRODUCT SAFETY COMMISSION (CPSC)
DIRECTORATE FOR EPIDEMIOLOGY
DIVISION OF HAZARD ANALYSIS**

The CPSC has two opportunities for GS-1529-14 Mathematical Statisticians. CPSC is an independent Federal regulatory agency that is responsible for protecting the American public from unreasonable risks of injury and death from over 15,000 consumer products. Your statistical training and experience will play a major role in helping us characterize the prevalence and hazard patterns associated with consumer products. These statistics are integral to identifying emerging trends, supporting development of safety features and standards and informing consumer product related enforcement and regulatory decisions.

Successful candidates for the position of Emerging Hazards Team Leader and the Mathematical Statistician position will join a team of statisticians in the Division of Hazard Analysis. Both positions require degrees in statistics, epidemiology, or mathematics. Specifically, experience with generation of parametric and non-parametric point and interval estimates, statistical modeling, design of experiments, sample size determination, and analysis of data from complex surveys is necessary. The ability to process, integrate, analyze and interpret results from multiple sources of national incident data and to formulate solutions that produce quantitatively defensible products is required.

The Emerging Hazards Team Leader will plan, direct and perform statistical efforts to identify emerging hazards and monitor the conduct of product safety assessments. The Mathematical Statistician will develop statistical designs and conduct statistical analyses to characterize consumer product related hazards and evaluation of reduction options.

Both of these positions are located in Bethesda, Maryland and are open to qualified U.S. citizens with either no prior Federal status or prior Federal Status. The Civil Service Salary for GS-14 is \$98,033 to \$127,442.

The CPSC is an Equal Opportunity Employer. Selection for these positions shall be determined on the basis of merit and without regard to race, color, national origin, gender, political preferences, marital status, sexual orientation, labor affiliation or non-affiliation or other non-merit factors.

For more information and to submit an application, please click on the Vacancy Announcements link at <http://www.cpsc.gov/about/hr.html>. There are two vacancy announcements for each position. One is open to the public. The other is for status candidates. The vacancy announcements are numbered 4320EPHA-2008-0001 and 4320EPHA-2008-0005 for the Team Leader Mathematical Statistician position and 4320EPHA-2008-0003 and 4320EPHA-2008-0006 for the Mathematical Statistician position.

GEORGETOWN UNIVERSITY MEDICAL CENTER

**FACULTY BIostatistician
CLINICAL TRIALS**

DEPARTMENT OF BIostatISTICS, BIOinformatics AND BIomathematics

The Department of Biostatistics, Bioinformatics and Biomathematics invites applications for a position of tenure-track assistant or associate professor of Biostatistics. Applicants should have a Ph.D. in Biostatistics or Statistics, expertise in the application of statistical methodology to clinical trials and at least 5 years experience in this field. The requirements for this position are a strong research background, excellent communication skills and an interest in teaching. The successful candidate will collaborate with physicians and scientists from the Lombardi Comprehensive Cancer Center, conduct independent biostatistical research, and teach in our Master's degree program.

Interested individuals should send a letter of application, curriculum vitae, and the names and addresses (including e-mail address) of three references to:

Françoise Seillier-Moiseiwitsch, Chair
Department of Biostatistics, Bioinformatics, and Biomathematics
Georgetown University Medical Center
Building D, Suite 180
4000 Reservoir Road
Washington, DC 20057-1484

or Irs8@georgetown.edu

This position has an immediate starting date.
Applications will be reviewed until the position is filled.

Senior Researcher/Manager, Surveys & Public Opinion

IFES, Inc. (www.ifes.org)

Applied Research Division

About IFES:

IFES is an international, nonprofit organization that supports the building of democratic societies. IFES provides targeted technical assistance to strengthen transitional democracies. Founded in 1987 as a nonpartisan, nonprofit organization, IFES has developed and implemented comprehensive, collaborative democracy solutions in more than 120 countries.

Responsibilities:

- a. Management of research functions, with a particular focus on opinion research projects.
- b. Developing relationships with programmatic staff to design resource efficient research designs to further programmatic objectives.
- c. Working with program staff to develop research initiatives in opinion research and elections-related field for bilateral and multilateral funding agencies; writing and budgeting of project proposals.
- d. Management of a small team of mid-level and junior researchers.
- e. Designing survey and focus group projects including sample design and questionnaire construction.
- f. Selection and oversight of local contractors and consultants.
- g. Providing technical oversight, direction, and quality control of research activities including in-country training and monitoring.
- h. Quantitative data analysis and writing of analytical reports.
- i. Oral communication of research results to a variety of audiences.

Qualifications:

- a. PhD with more than 4 years experience or Masters degree with more than 6 years experience in conducting survey research in an international setting. Experience in international development or related field a plus.
- b. Experience with management of all aspects of survey research projects.
- c. Data analysis skills.
- d. Proficiency in SPSS or related program.
- e. Experience with conflict resolution programming or analysis of conflicts a plus.
- f. Experience with research in elections management field a plus.
- g. Foreign Language skills a plus.

h. Proficient with Microsoft Excel, PowerPoint and Word.

Successful candidate will be able to demonstrate the following attributes:

- a. Skilled communicator, both verbally and in writing.
- b. Exacting attention to detail and highly organized.
- c. Collaborative, team oriented individual.
- d. Strong supervisory skills and abilities.
- e. Ability to give general direction to staff, prioritize, and handle multiple tasks under tight deadlines.

Applying:

Applications will be accepted online only, through the IFES website. To apply visit our careers website at <http://www.ifes.org/careers.html>. Then follow the instructions on how to upload your resume and answer prescreening questions. A cover letter is welcome and can be placed in the applicant notes section.

EEO/V/D/M/F

#72-07

Note from the WSS NEWS Editor

Items for publication in the March issue of the WSS NEWS will be accepted until February 15, 2008. E-mail items to Michael Feil at michael.feil@usda.gov.



P.O. Box 752
Suitland, MD 20752

NON-PROFIT
ORG.
U.S. POSTAGE
PAID

Washington
Statistical
Society

| | | | | | |
|---|--|--|--|--|--|
| President Michael P. Cohen | 202-232-4651 | Past President Jill Montaquila | 301-517-4046 | President-Elect Karol P. Krotki | 202-728-2485 |
| | Secretary Chris Moriarity | 301-458-4380 | Treasurer Daniell Toth | 202-691-7380 | |
| Vice Chair for District 2 of Council of Chapters Glenn White | 202-327-6414 | Representative-at-Large Polly Phipps Brian A. Harris-Kojetin | 202-691-7513 202-395-7314 | Council of Chapters Representative Jonaki Bose | 240-276-1257 |
| | Student Representative Joe Maisog | 703-465-2006 | Allen Schirm Jeri Mulrow | 202-484-4686 703-292-4784 | |
| Agriculture and Natural Resources Mel Kollander Mike Fleming Barry Nussbaum | 703-642-8079 202-366-5419 202-566-1493 | Economics Linda Atkinson Anne Polivka | 202-694-5046 202-691-7395 | Methodology Meena Khare Keith F. Rust | 301-458-4312 301-251-8278 |
| Public Health and Biostatistics Grant Izmirlan Myron Katzoff | 301-496-7519 301-458-4307 | Public Policy Michael L. Cohen Shelly Martinez | 202-334-3765 202-395-3147 | Quality Assurance and Physical Sciences Amrut Champaneri Alan Jeeves | 202-366-5998 202-366-4194 |
| Defense and National Security Wendy Martinez Myron Katzoff | 703-696-4320 301-458-4307 | Human Rights Wendy Rotz Hormuzd Katki | 202-327-7822 301-594-7818 | Statistical Computing Charlie Hallahan Dean H. Judson | 202-694-5051 301-763-2057 |
| Short Courses Sylvia Dohrmann | 301-610-5119 | Social and Demographic Statistics Judy Droitcour Promod Chandbok | 202-512-9145 202-366-2158 | Membership John Czajka John Dixon Timothy Kennel Adam Safir Fritz Scheuren | 202-484-4685 202-691-7516 301-763-6795 202-974-7822 202-320-3446 |
| Electronic Mail Committee Michael Greene S.V. (Vince) Massimini | 301-504-7335 703-983-5893 | Data Collection Methods Sameena Salvucci Nancy Clusen Carol Blumberg Eugene Burns | 202-484-4215 202-484-5263 202-586-6565 202-586-1385 | Curtis Jacobs Award Tom Krenzke | 301-251-4203 |
| Webmaster Dan Jacobs | 301-403-4220 | WSS NEWS Editor Michael Feil | 202-690-3130 | Local Arrangements Kevin Cecco | 202-874-0464 |
| Employment Anne Peterson | 703-979-1191 | Quantitative Literacy Carolyn Carroll | 202-320-8709 | Quantitative Literacy Workshop Mark Otto | 301-497-5872 |
| Video Librarian Phil Kalina | 703-725-6600 | Quantitative Literacy Poster Competition Stacey Chan Ryan Petska | 202-327-5914 202-327-7245 | Financial Advisor and Audit Committee Stuart Scott R. Clifton Bailey | 202-691-7383 703-893-8719 |
| Social Arrangements Yasmin Said Yves Thiibaudeau | 301-538-7478 301-763-1706 | WSS Committee on ASA Fellows Steve Cohen Dwight Brock Carol House Fritz Scheuren | 301-427-1466 301-517-4026 202-720-4333 202-320-3446 | Historian Tom Mule | 301-457-8322 |
| Video Coordinator John Dixon | 202-691-7516 | Science Fair Coordinator Bob Clickner | 301-294-2815 | | |